

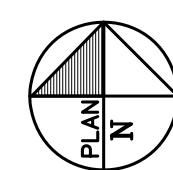


NOTES :

1. THE REFERENCE FINISH MAIN FLOOR ELEVATION = 0'-0".
2. SEE SHEET S0.1 FOR LIGHT GAUGE STUD WALL FRAMING NOTES & WALL CONSTRUCTION DETAILS. LOAD BEARING WALLS & SHEAR WALLS ARE SHOWN SHADED ON THE PLAN.
3. SEE THE ARCHITECTURAL DRAWINGS FOR WALL DIMENSIONS NOT NOTED ON THIS PLAN.
4. SEE SHEET S0.1 FOR ADDITIONAL STRUCTURAL NOTES.

FOUNDATION PLAN 01

SCALE : 1/8" = 1'-0"



Interior Alteration
POWER SECURE
 1609 Heritage Commerce Ct
 Wake Forest, North Carolina



120 SAINT MARY'S ST.
 RALEIGH, NC 27605
 PH: (919) 833-0495
 FAX: (919) 833-7830
 N.C. FIRM LICENSE C-0821

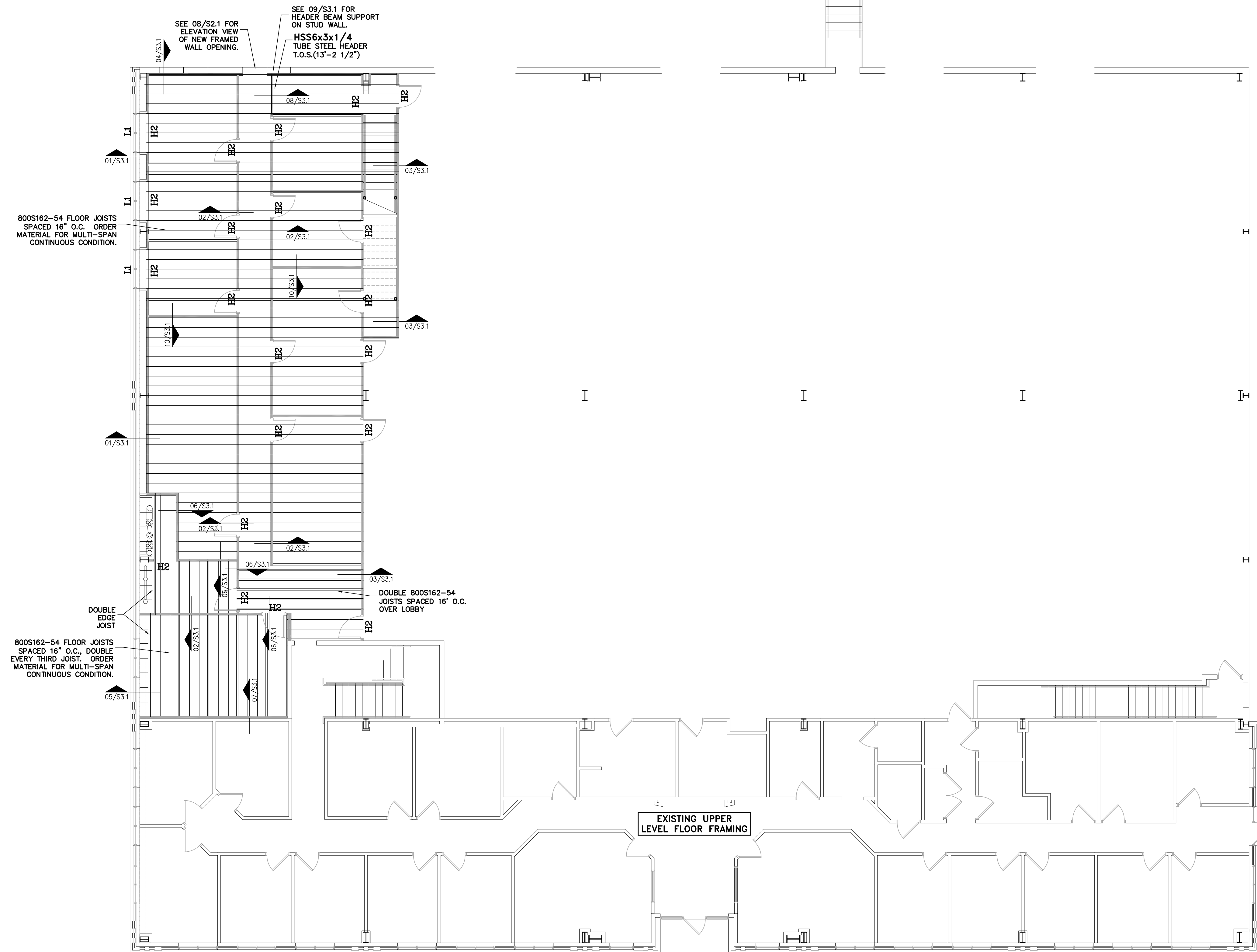
PROGRESS DRAWING
 DO NOT USE FOR
 CONSTRUCTION

MAURER ARCHITECTURE
 119 EAST HARGETT STREET, SUITE 300
 RALEIGH, NORTH CAROLINA 27601
 TEL. 919-829-4969 FAX. 919-829-0860

DATE	04/01/14
DR.	JES
CH.	
PROJ. #	LA-10113
REVISIONS	DATE

FOUNDATION
 PLAN

S1.1



FLOOR FRAMING PLAN NOTES :

1. THE REFERENCE FINISH UPPER FLOOR ELEVATION (TOP OF GYPCRETE IS AT 14'-0". THE TOP OF PLYWOOD FLOOR SHEATHING IS AT 13'-11 1/4".
2. FLOOR CONSTRUCTION CONSISTS OF 3/4" OF GYPCRETE OVER 3/4" THICK, 48/24 APA RATED, FIRE-RETARDANT-TREATED, CDX T&G PLYWOOD FLOOR SHEATHING. ATTACH SHEATHING TO FRAMING W/ #12 SCREWS SPACED 6" O.C. AT PANEL EDGES AND 12" O.C. IN THE PANEL FIELD.
3. SEE SHEET S0.1 FOR LIGHT GAUGE STUD WALL FRAMING NOTES & WALL CONSTRUCTION DETAILS. LOAD BEARING WALLS & SHEAR WALLS ARE SHOWN SHADED ON THE PLAN.
4. STEEL STAIRS ARE TO BE DESIGNED BY THE SUPPLIER AS A SELF-SUPPORTING ELEMENT, INDEPENDENT OF LIGHT GAUGE FRAMING.
5. REFER TO ARCHITECTURAL DRAWINGS FOR DEMOLITION REQUIREMENTS.
6. SEE THE ARCHITECTURAL PLANS FOR DIMENSIONS LOCATING NEW STUD WALLS AND WALL OPENINGS WHERE NOT SHOWN ON THIS PLAN. SEE THE HEADER SCHEDULE ON THIS SHEET FOR HEADER CONSTRUCTION AT NEW WALL OPENINGS. SEE THE LINTEL SCHEDULE THIS SHEET FOR LINTEL CONSTRUCTION AT NEW WALL OPENINGS IN EXISTING EXTERIOR WALLS.
7. SEE SHEET S0.01 FOR ADDITIONAL STRUCTURAL NOTES.

LIGHT GAUGE FLOOR JOIST CONSTRUCTION NOTES

THE TYPICAL FLOOR JOIST SPACING SHALL BE 16" UNLESS NOTED OTHERWISE.

PROVIDE CONTINUOUS, FULL DEPTH BLOCKING AT END SUPPORTS OF ALL LIGHT GAUGE STEEL JOISTS. FOR ALL JOIST SPANS 16'-0" AND LESS, PROVIDE ONE ROW OF BRIDGING AT MIDSPAN. FOR ALL JOIST SPANS EXCEEDING 16'-0", PROVIDE (2) ROWS OF JOIST BRIDGING AT THIRD POINTS. INSTALL BRIDGING AS FOLLOWS:

USE SOLID, FULL DEPTH BRIDGING IN FIRST TWO JOIST SPACES AND THE LAST TWO SPACES OF JOISTS. ATTACH 2"x14" GAGE FLAT STRAP BRIDGING AT THE BOTTOM FLANGES OF JOISTS FROM THE THIRD JOIST SPACE EXTENDING FOR A 12'-0" RUN. REPEAT SOLID BRIDGING FOR ONE JOIST SPACE AND REPEAT FLAT STRAP BRIDGING FOR ANOTHER 12'-0" RUN. CONTINUE THIS PATTERN FOR THE FULL LENGTH OF THE LIGHT GAUGE FRAMING.

FULL DEPTH BLOCKING AND BRIDGING SHALL BE OF THE SAME GAGE MATERIAL AS THE FLOOR JOISTS THEY BRACE.

WEB PUNCHOUTS FOR BRIDGING MUST BE LOCATED A MINIMUM OF 10" FROM BEARING POINTS.

PHYSICAL PROPERTIES FOR LIGHT GAUGE JOISTS ARE AS FOLLOWS:

800S162-54 8", 16 GAGE JOIST W/ 1-5/8" FLANGE & 1/2" RETURN
 A = 0.670 in² Sx = 1.435 in³ Ix = 5.740 in⁴

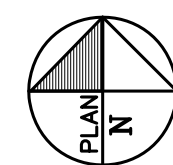
HEADER SCHEDULE				
MARK	SIZE	MAX SPAN	END BRNG	DETAIL
H1	BOX HEADER W/ (2) 362S162-43 JOISTS & 18ga TRACK TOP & BOTTOM. SEE "B"/S0.1.	5'-4"	"B"/S0.1	
H2	HSS 3-1/2 x 3-1/2 x 1/4 TUBE STEEL HEADER. SEE DETAIL "C"/S0.1.	5'-4"	"C"/S0.1	

LINTEL SCHEDULE				
MARK	SIZE	MAX SPAN	END BRNG	DETAIL
L1	BOX HEADER W/ (2) 800S162-43 JOISTS & 18ga TRACK TOP & BOTTOM. SEE "D"/S0.1. L4x4x1/4 BRICK SHELF ANGLE	5'-4"	"D"/S0.1 6" Ø ANGLE	

THE G.C. IS RESPONSIBLE FOR TEMPORARY SHORING OF EXISTING LIGHT GAUGE METAL STUD WALL FRAMING AND BRICK VENEER DURING CONSTRUCTION OF NEW WALL OPENINGS.

UPPER LEVEL FLOOR FRAMING PLAN 01

SCALE : 1/8" = 1'-0"



Interior Alteration
POWER SECURE
 1609 Heritage Commerce Ct
 Wake Forest, North Carolina

L&A LYSRAGHT & ASSOCIATES
 structural engineers
 120 SAINT MARY'S ST.
 RALEIGH, NC 27605
 PH: (919) 833-0495
 FAX: (919) 833-7630
 N.C. FIRM LICENSE C-0621

PROGRESS DRAWING
 DO NOT USE FOR
 CONSTRUCTION

MAURER ARCHITECTURE
 119 EAST HARGETT STREET, SUITE 300
 RALEIGH, NORTH CAROLINA 27601
 TEL. 919-829-4969 FAX. 919-829-0860

DATE	04/01/14
DR.	JES
CH.	
PROJ. #	LA-10113
REVISIONS	DATE

FLOOR FRAMING PLAN

S1.2



FLOOR FRAMING PLAN NOTES :

1. THE REFERENCE FINISH UPPER FLOOR ELEVATION (TOP OF GYPCRETE) IS AT 14'-0".
2. INSTALL 1/2" THICK GYPSUM SHEATHING AT THE UNDERSIDE OF ALL CEILING JOISTS. GYPSUM SHEATHING SHALL BE ATTACHED TO FRAMING W/ #6 x 1-1/4" TYPE S SCREWS SPACED 6" O.C. AT PANEL EDGES AND 12" O.C. IN THE PANEL FIELD.
3. SEE SHEET S0.1 FOR LIGHT GAUGE STUD WALL FRAMING NOTES & WALL CONSTRUCTION DETAILS. LOAD BEARING WALLS ARE SHOWN SHADED ON THE PLAN.
4. REFER TO ARCHITECTURAL DRAWINGS FOR DEMOLITION REQUIREMENTS.
5. SEE THE ARCHITECTURAL PLANS FOR DIMENSIONS, LOCATING NEW STUD WALLS AND WALL OPENINGS WHERE NOT SHOWN ON THIS PLAN. SEE THE HEADER SCHEDULE ON SHEET S1.2 FOR HEADER CONSTRUCTION AT NEW WALL OPENINGS.
6. SEE SHEET S0.01 FOR ADDITIONAL STRUCTURAL NOTES.

LIGHT GAGE CEILING JOIST CONSTRUCTION NOTES

THE TYPICAL CEILING JOIST SPACING SHALL BE 16" UNLESS NOTED OTHERWISE.
 PROVIDE CONTINUOUS, FULL DEPTH BLOCKING AT END SUPPORTS OF ALL LIGHT GAGE STEEL JOISTS. FOR ALL JOIST SPANS 16'-0" AND LESS, PROVIDE ONE ROW OF BRIDGING AT MIDSPAN. FOR ALL JOIST SPANS EXCEEDING 16'-0", PROVIDE (2) ROWS OF JOIST BRIDGING AT THIRD POINTS. INSTALL BRIDGING AS FOLLOWS:

PROVIDE ROWS OF CONTINUOUS BRIDGING AS SHOWN ON THE FRAMING PLAN. AT EACH BRIDGING ROW, USE SOLID BRIDGING IN THE FIRST TWO SPACES AND THE LAST TWO SPACES OF JOISTS. ATTACH 2"x16 GAGE FLAT STRAP BRIDGING TO THE TOP FLANGES OF JOISTS FROM THE THIRD JOIST SPACE EXTENDING FOR A 12'-0" RUN. REPEAT SOLID BRIDGING FOR ONE JOIST SPACE AND REPEAT FLAT STRAP BRIDGING FOR ANOTHER 12'-0" RUN. CONTINUE FULL LENGTH OF LIGHT GAGE FRAMING.

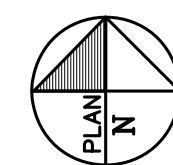
FULL DEPTH BLOCKING AND BRIDGING SHALL BE OF THE SAME GAGE MATERIAL AS THE CEILING JOISTS THEY BRACE.

PHYSICAL PROPERTIES FOR LIGHT GAGE CEILING JOISTS ARE AS FOLLOWS:

600S162-33 6", 18 GAGE JOIST W/ 1-5/8" FLANGE & 1/2" RETURN
 $A = 0.670 \text{ in}^2$ $S_x = 1.435 \text{ in}^3$ $I_x = 5.740 \text{ in}^4$

UPPER LEVEL CEILING FRAMING PLAN 01

SCALE : 1/8" = 1'-0"



Interior Alteration
POWER SECURE
 1609 Heritage Commerce Ct
 Wake Forest, North Carolina



120 SAINT MARY'S ST.
 RALEIGH, NC 27605
 PH: (919) 833-0495
 FAX: (919) 833-7630
 N.C. FIRM LICENSE C-0621

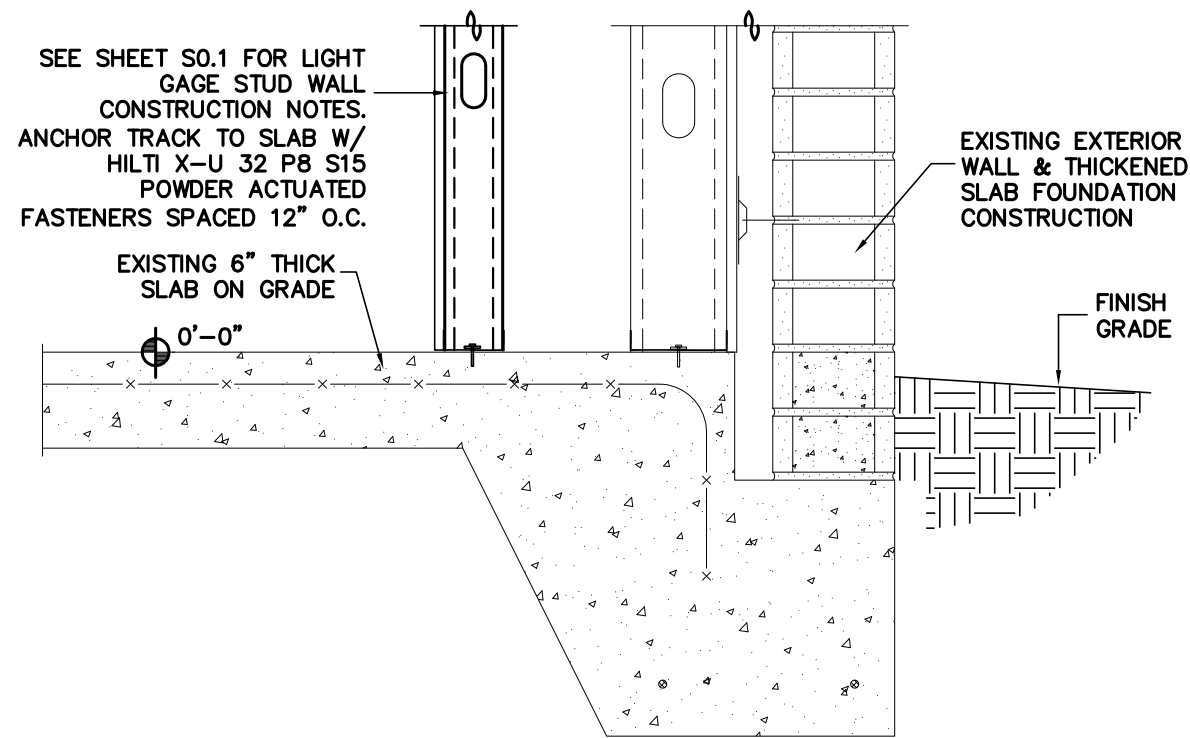
PROGRESS DRAWING
 DO NOT USE FOR
 CONSTRUCTION

MAURER ARCHITECTURE
 119 EAST HARGETT STREET, SUITE 300
 RALEIGH, NORTH CAROLINA 27601
 TEL. 919-829-4969 FAX. 919-829-0860

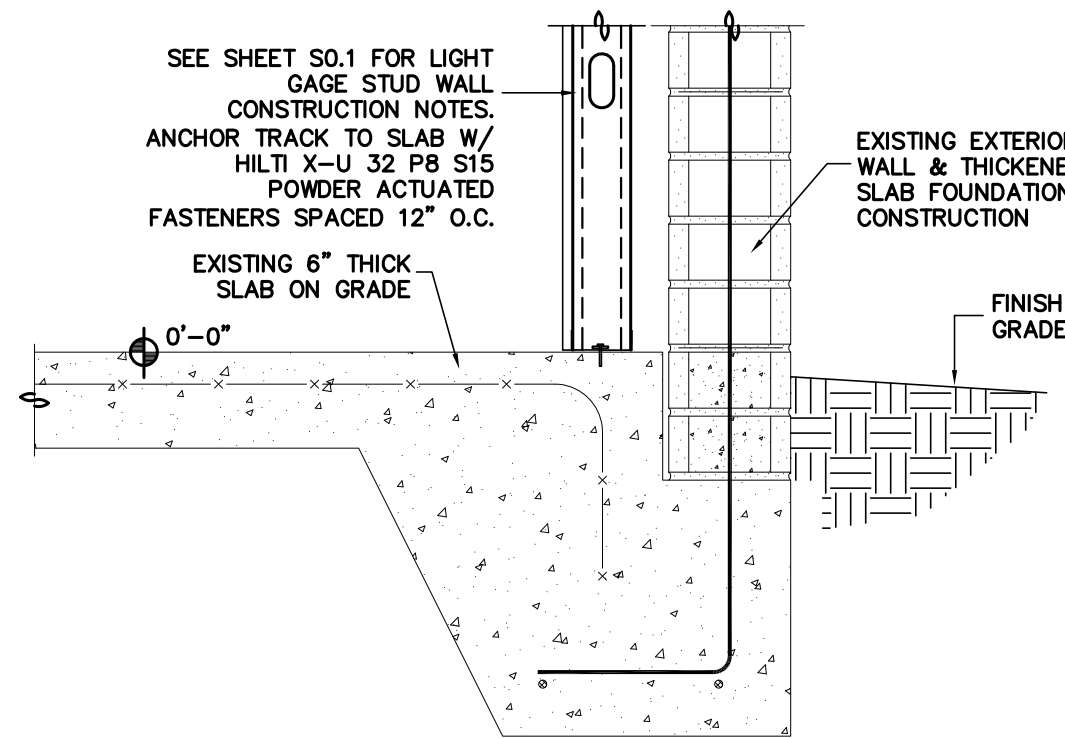
DATE	04/01/14
DR.	JES
CH.	.
PROJ. #	LA-10113
REVISIONS	DATE

UPPER FLOOR
 CEILING FRAMING
 PLAN

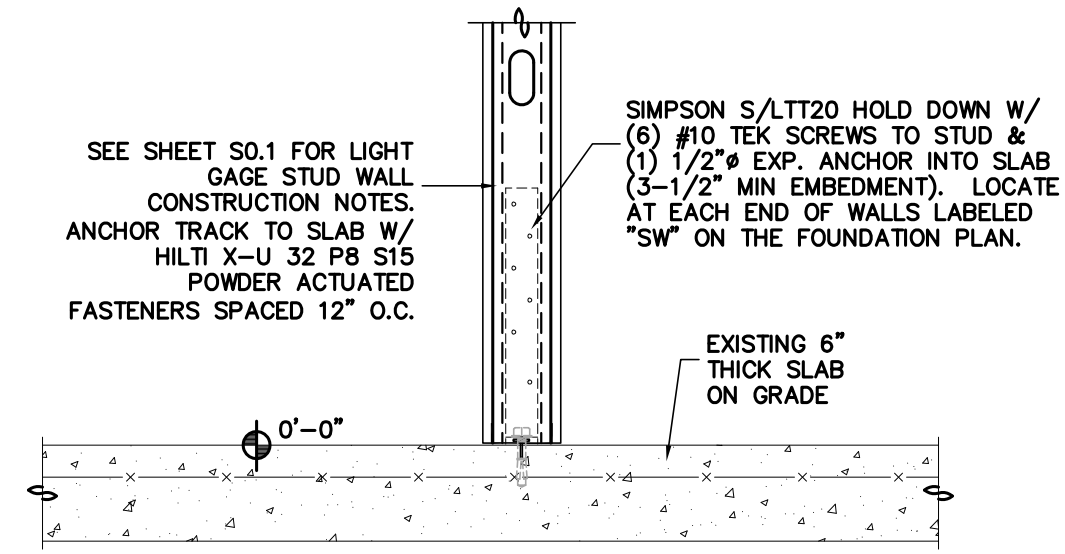
S1.3



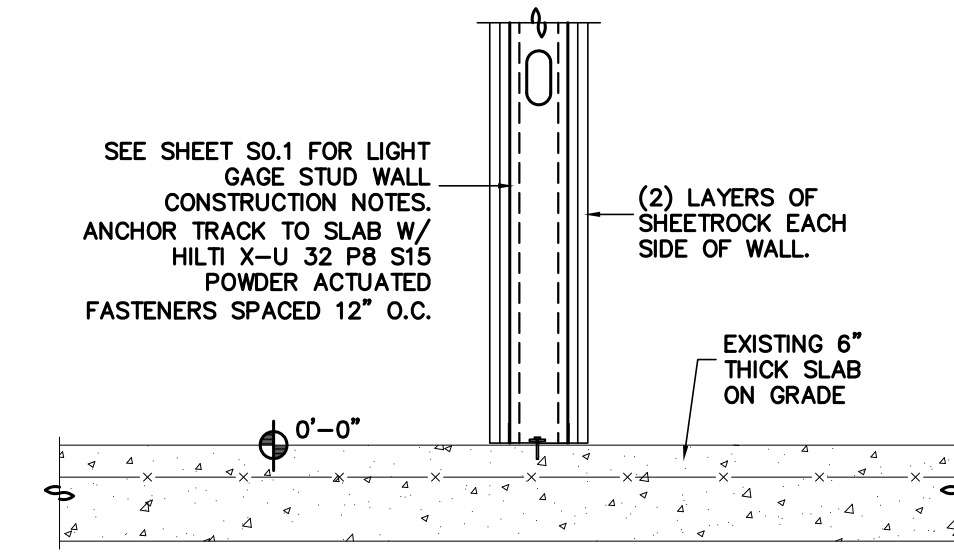
DETAIL 01 1" SCALE
LOAD BEARING STUD WALL FRAMING SUPPORT ON EXISTING SLAB



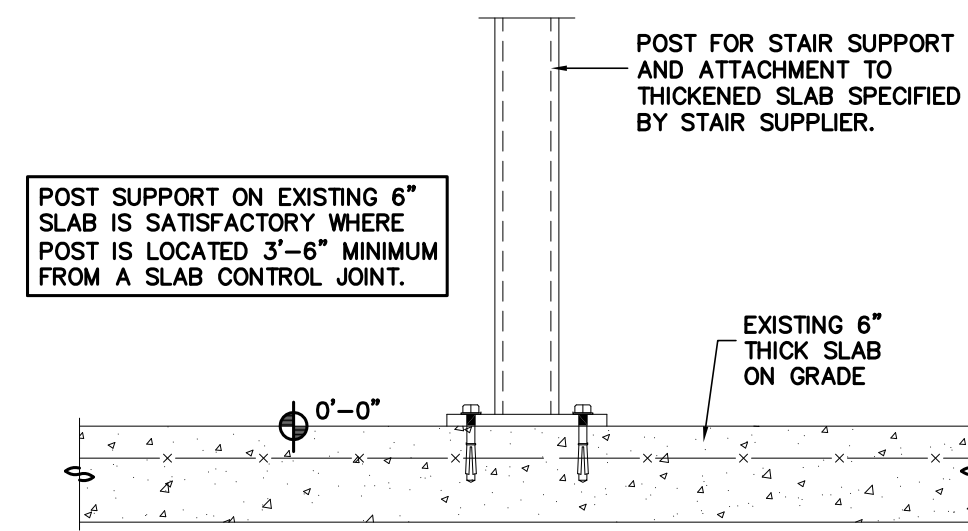
DETAIL 02 1" SCALE
LOAD BEARING STUD WALL FRAMING SUPPORT ON EXISTING SLAB



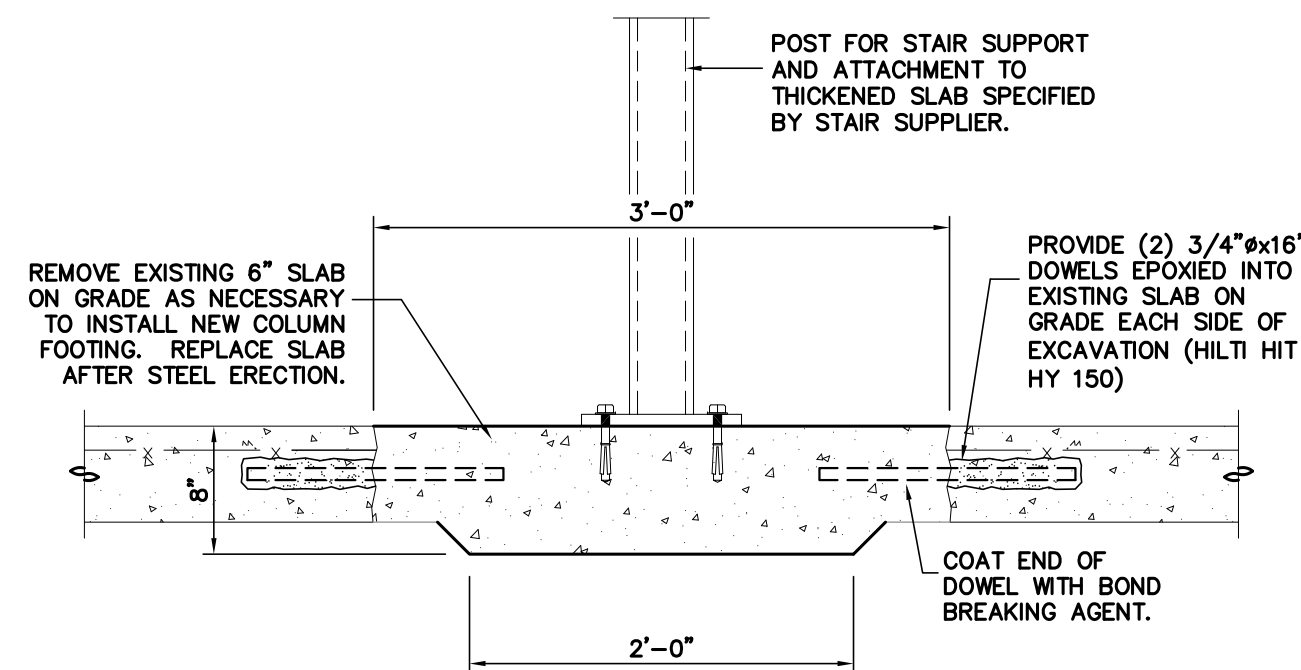
DETAIL 03 1" SCALE
LOAD BEARING STUD WALL FRAMING SUPPORT ON EXISTING SLAB



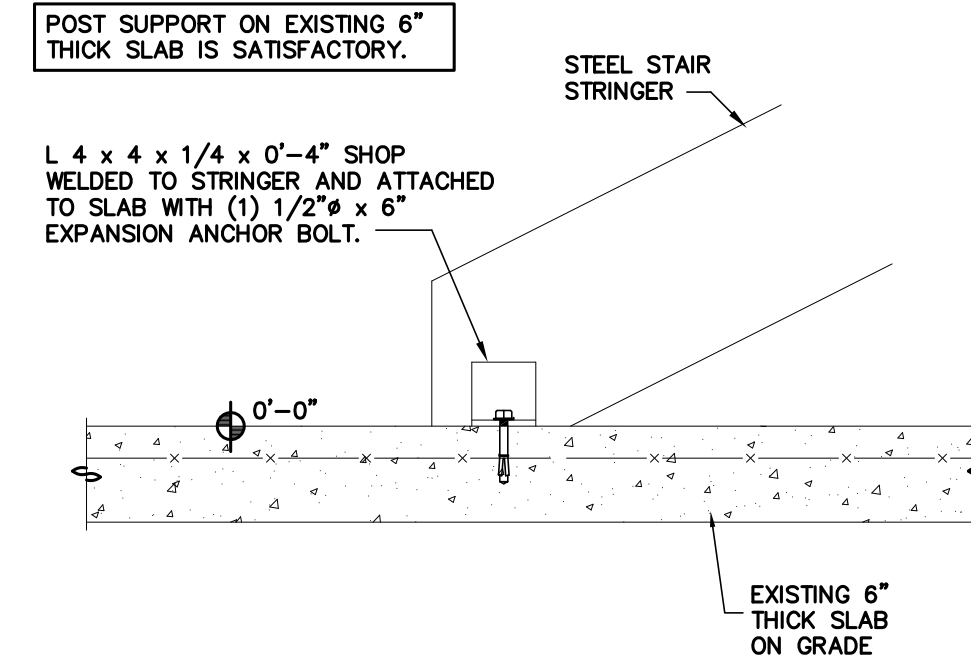
DETAIL 04 1" SCALE
LOAD BEARING STUD WALL FRAMING SUPPORT ON EXISTING SLAB



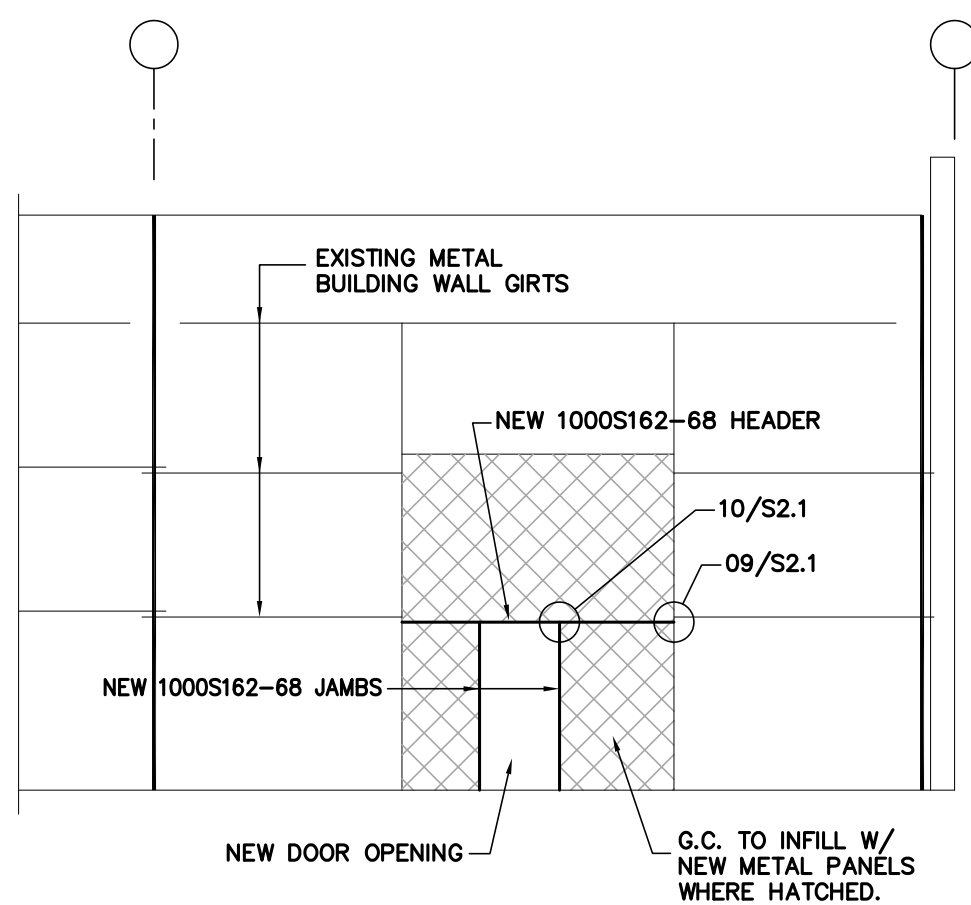
DETAIL 05 1" SCALE
STAIR POST SUPPORT ON SLAB ON GRADE



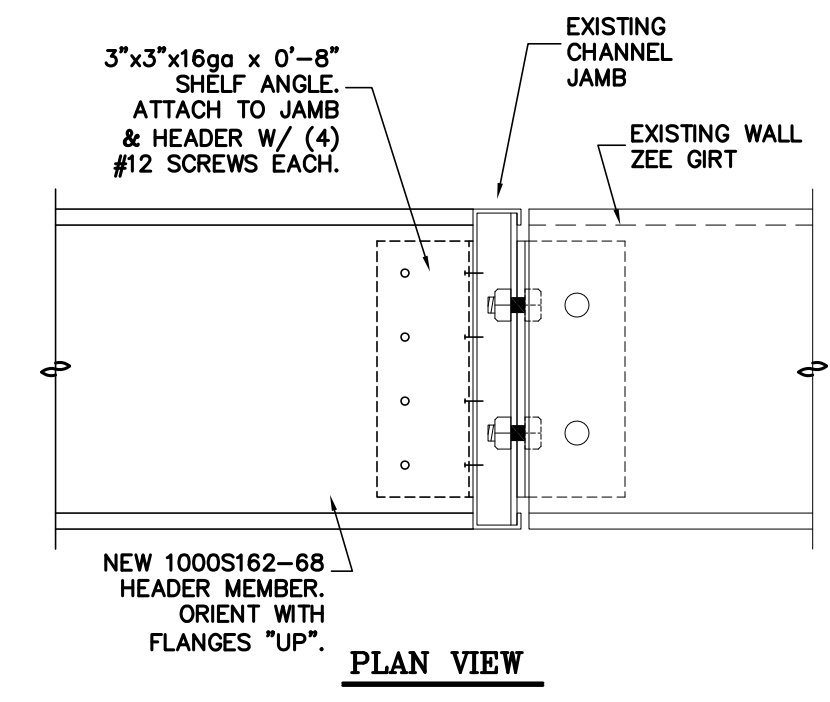
DETAIL 06 1" SCALE
NEW FOOTING CONSTRUCTION FOR STAIR POST SUPPORT



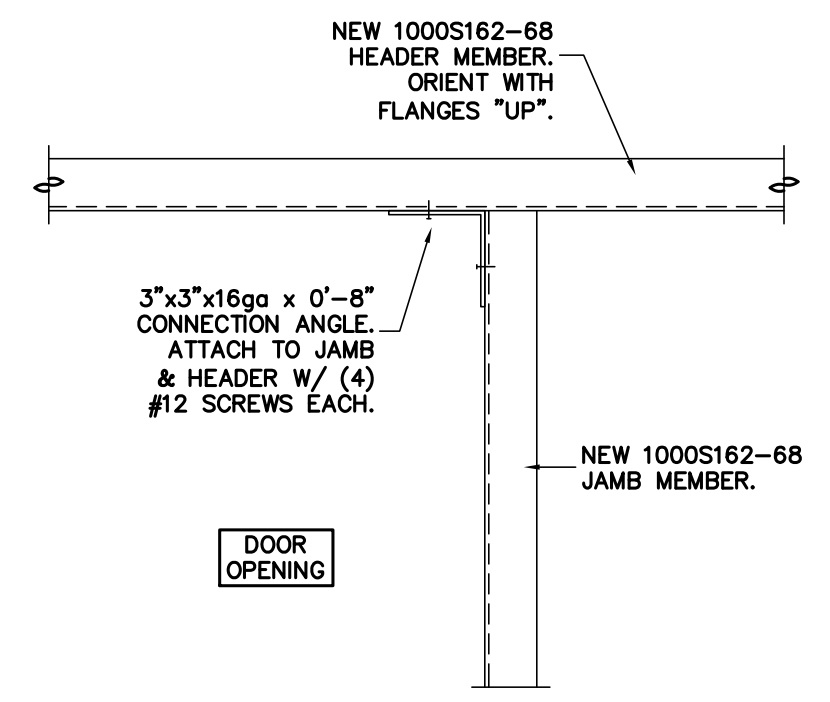
DETAIL 07 1" SCALE
STAIR STRINGER SUPPORT ON SLAB ON GRADE



DETAIL 08 1/8" SCALE
NEW FRAMED OPENING CONSTRUCTION AT EXISTING BUILDING EXTERIOR WALL



DETAIL 09 2" SCALE
DOOR OPENING HEADER TO EXISTING JAMB CONNECTION



DETAIL 10 2" SCALE
DOOR OPENING JAMB TO HEADER CONNECTION

Interior Alteration
POWER SECURE
 1609 Heritage Commerce Ct
 Wake Forest, North Carolina

L&A LYSAGHT & ASSOCIATES
structural engineers
 120 SAINT MARY'S ST.
 RALEIGH, NC 27605
 PH: (919) 833-0495
 FAX: (919) 833-7630
 N.C. FIRM LICENSE C-0621

PROGRESS DRAWING
 DO NOT USE FOR
 CONSTRUCTION

MAURER ARCHITECTURE
 119 EAST HARGETT STREET, SUITE 300
 RALEIGH, NORTH CAROLINA 27601
 TEL: 919-829-4969 FAX: 919-829-0860

DATE	04/08/14
DR.	JES
CH.	
PROJ. #	LA-10113
REVISIONS	DATE

FOUNDATION DETAILS

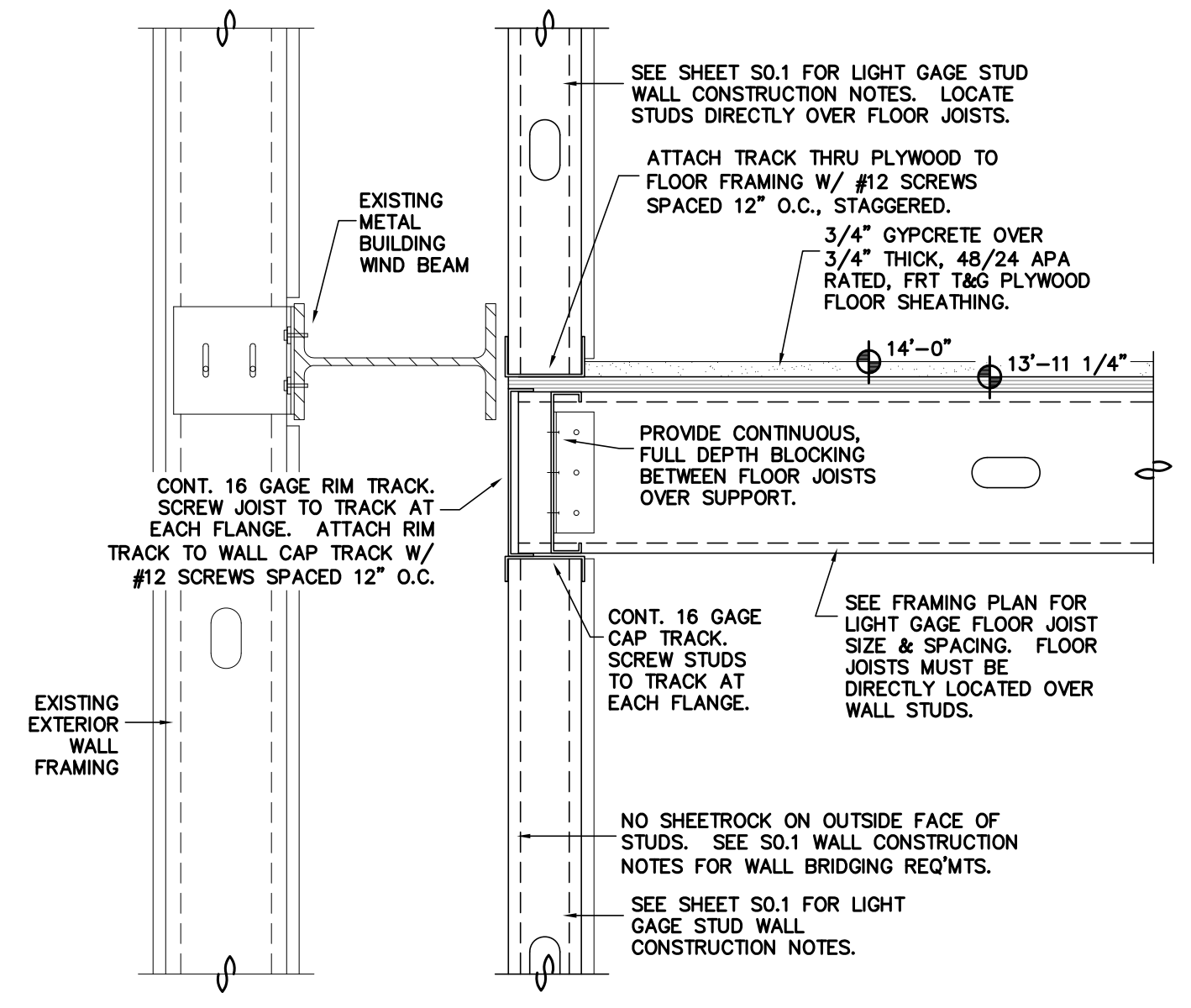
S2.1



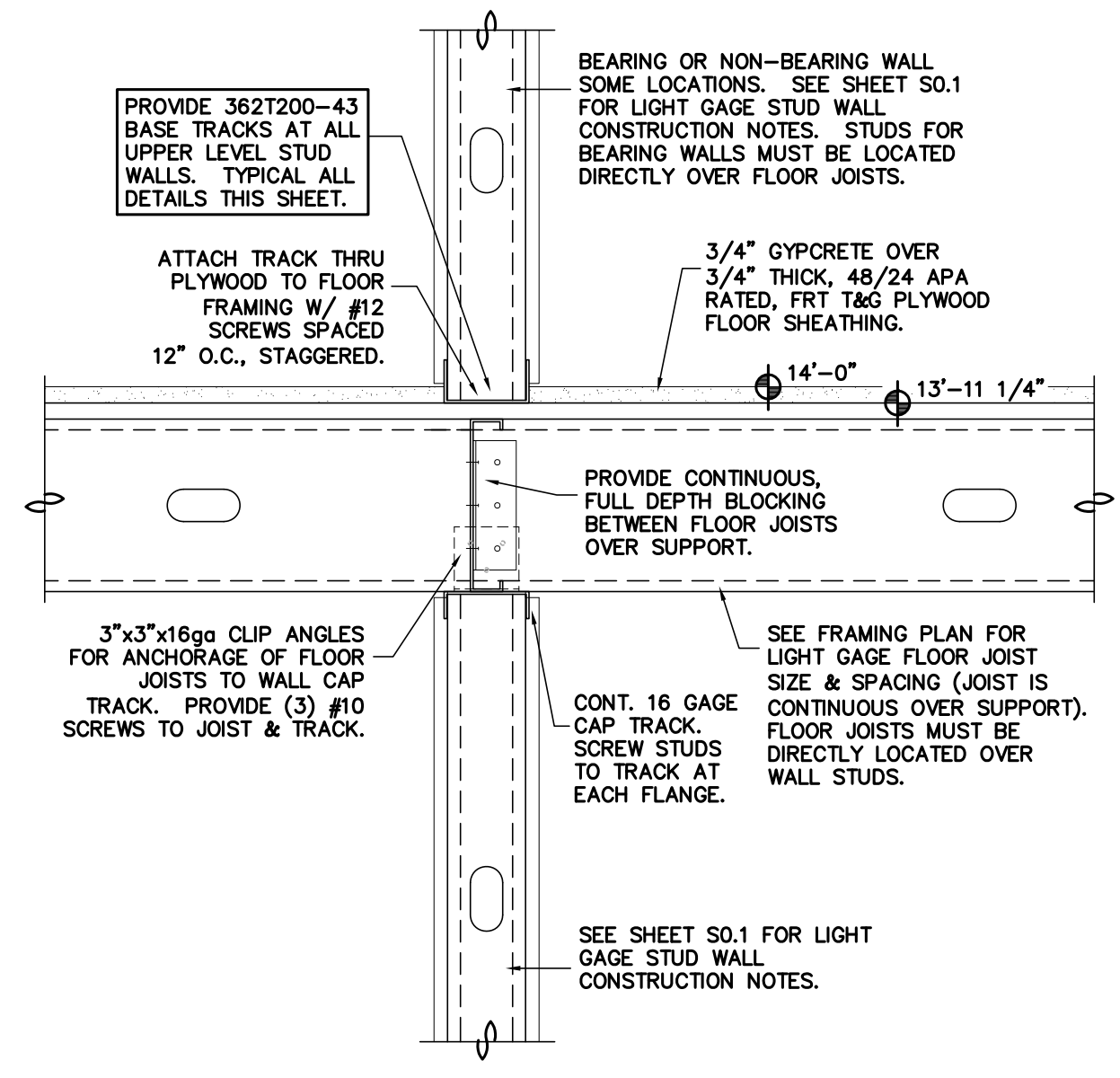
**PROGRESS DRAWING
 DO NOT USE FOR
 CONSTRUCTION**

MAURER ARCHITECTURE
 119 EAST HARGETT STREET, SUITE 300
 RALEIGH, NORTH CAROLINA 27601
 TEL. 919-829-4969 FAX. 919-829-0860

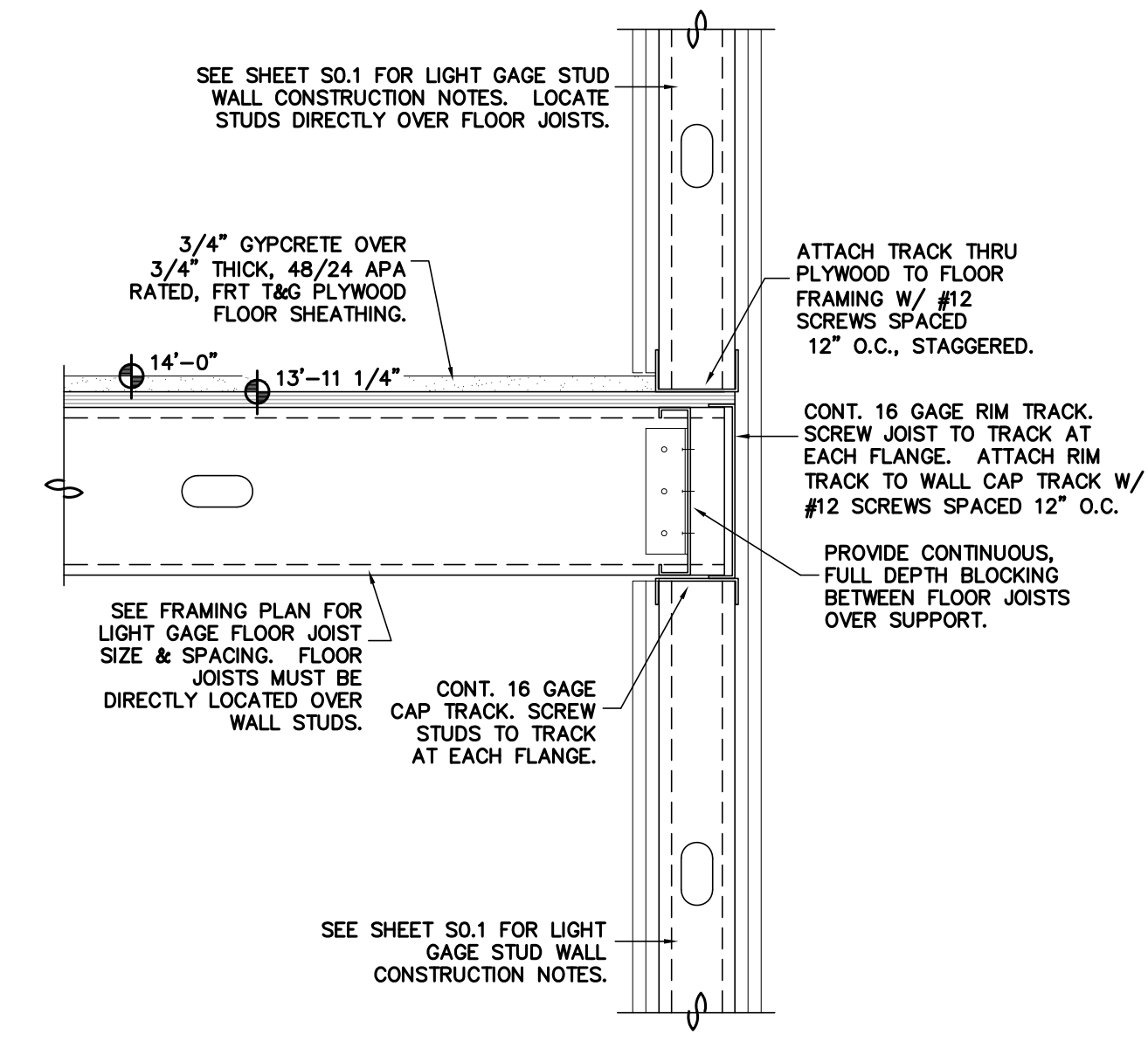
DATE	04/08/14
DR.	JES
CH.	
PROJ. #	LA-10113
REVISIONS	DATE



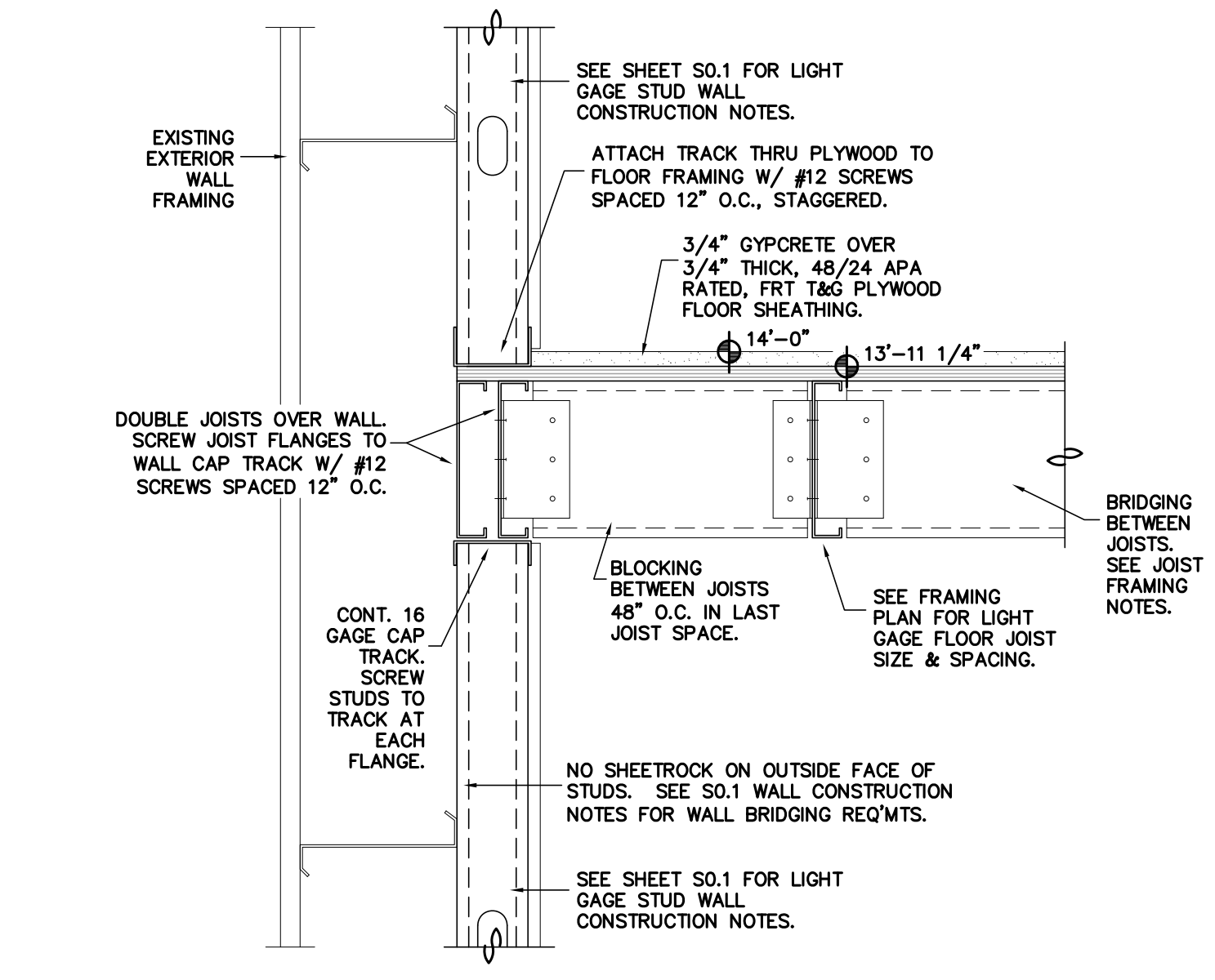
DETAIL 01 1 1/2" SCALE
 FLOOR JOIST BEARING AT EXTERIOR WALL



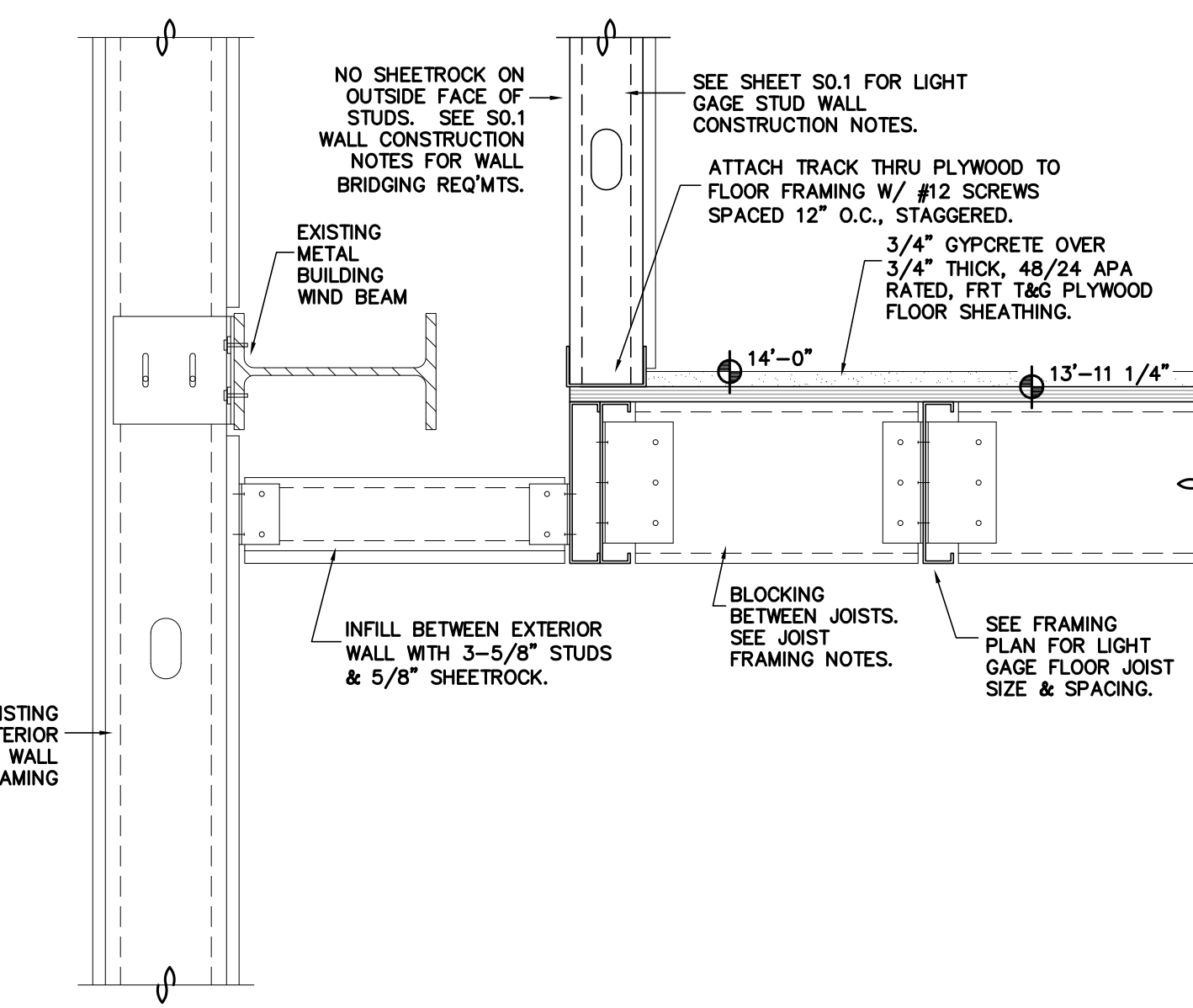
DETAIL 02 1 1/2" SCALE
 FLOOR JOIST BEARING AT INTERIOR WALL



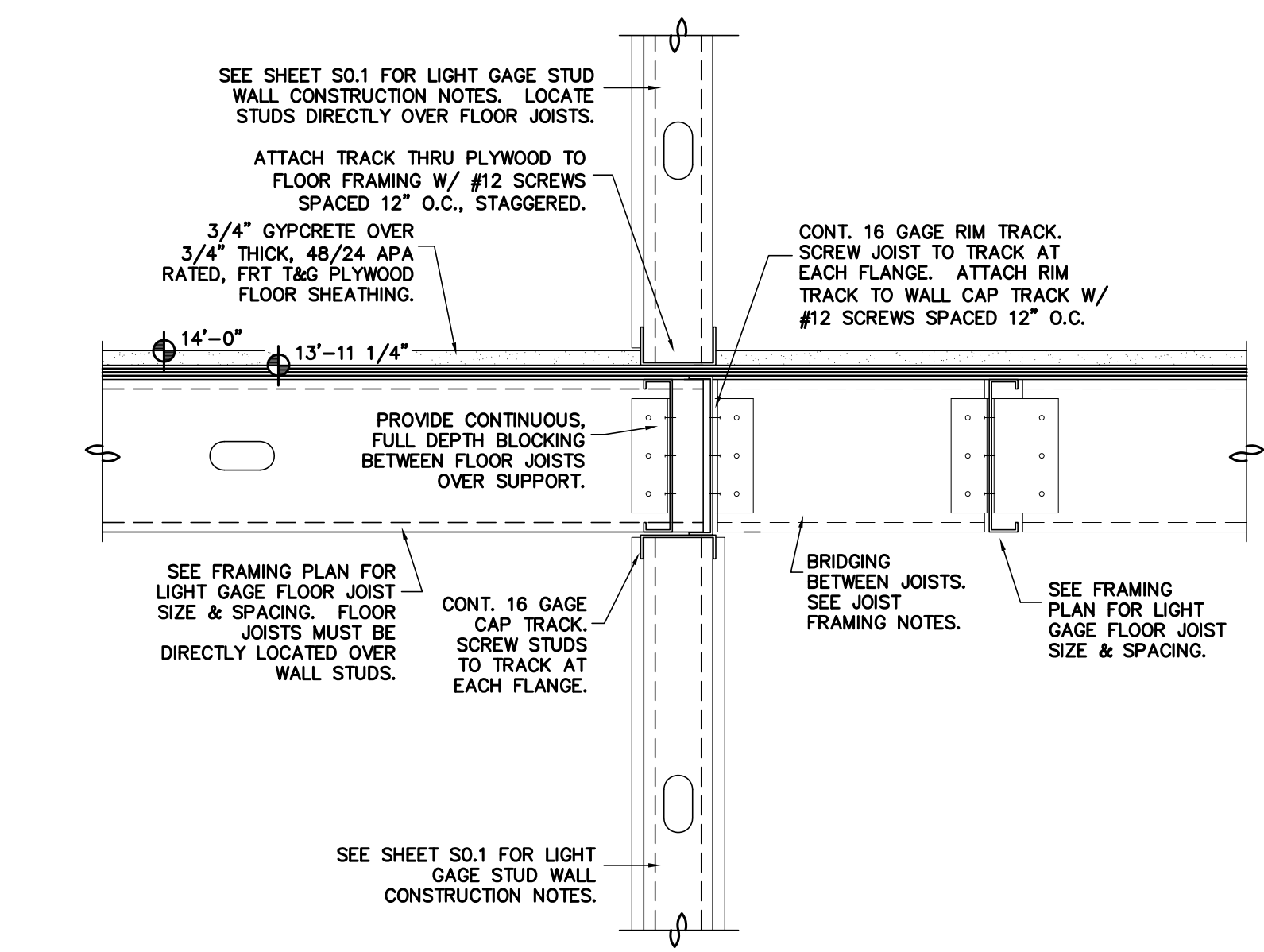
DETAIL 03 1 1/2" SCALE
 FLOOR JOIST BEARING AT INTERIOR WALL (PERIMETER OF ADDITION)



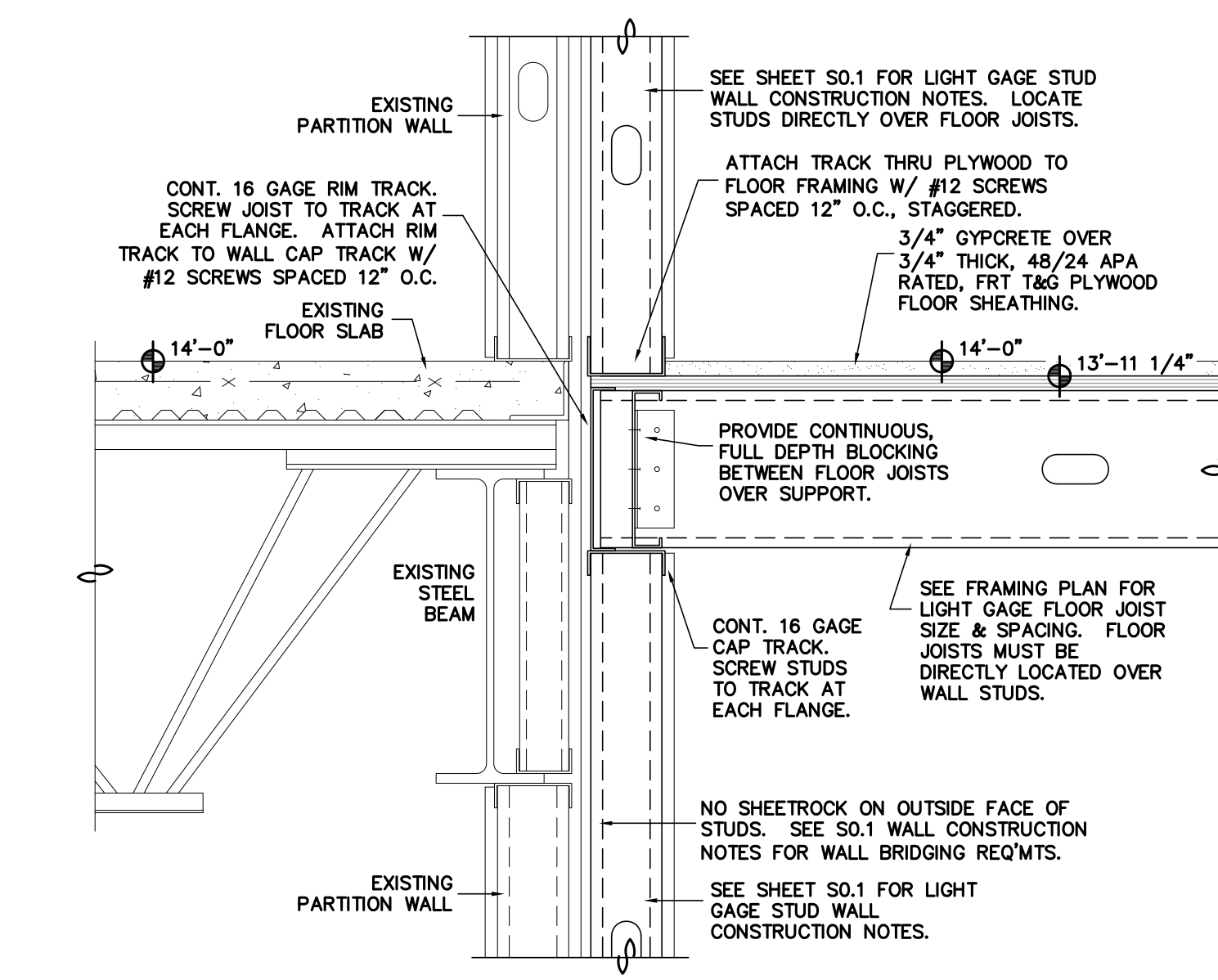
DETAIL 04 1 1/2" SCALE
 FLOOR FRAMING SECTION AT EXTERIOR WALL



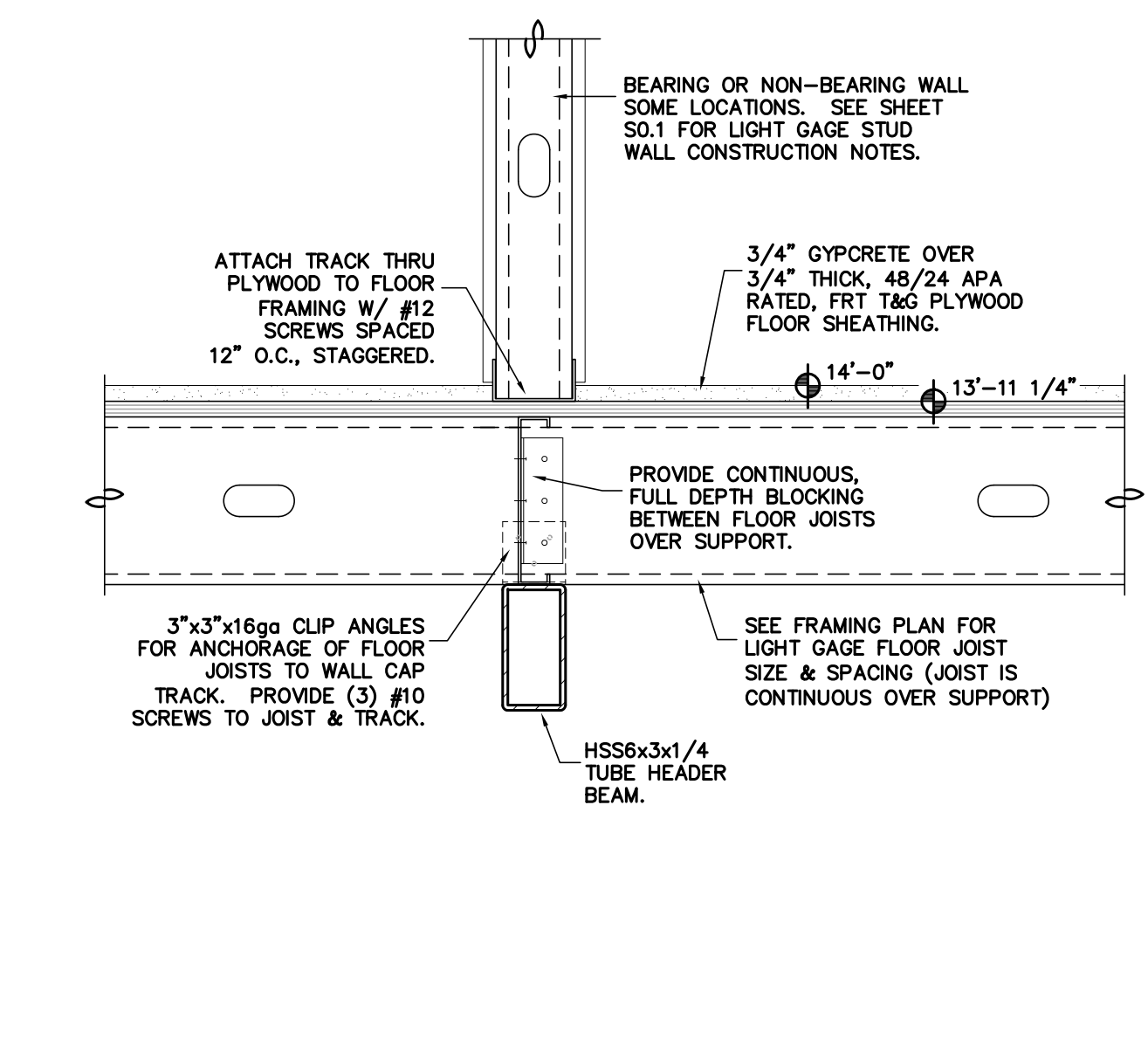
DETAIL 05 1 1/2" SCALE
 FLOOR FRAMING SECTION AT BUILDING EXTERIOR WALL



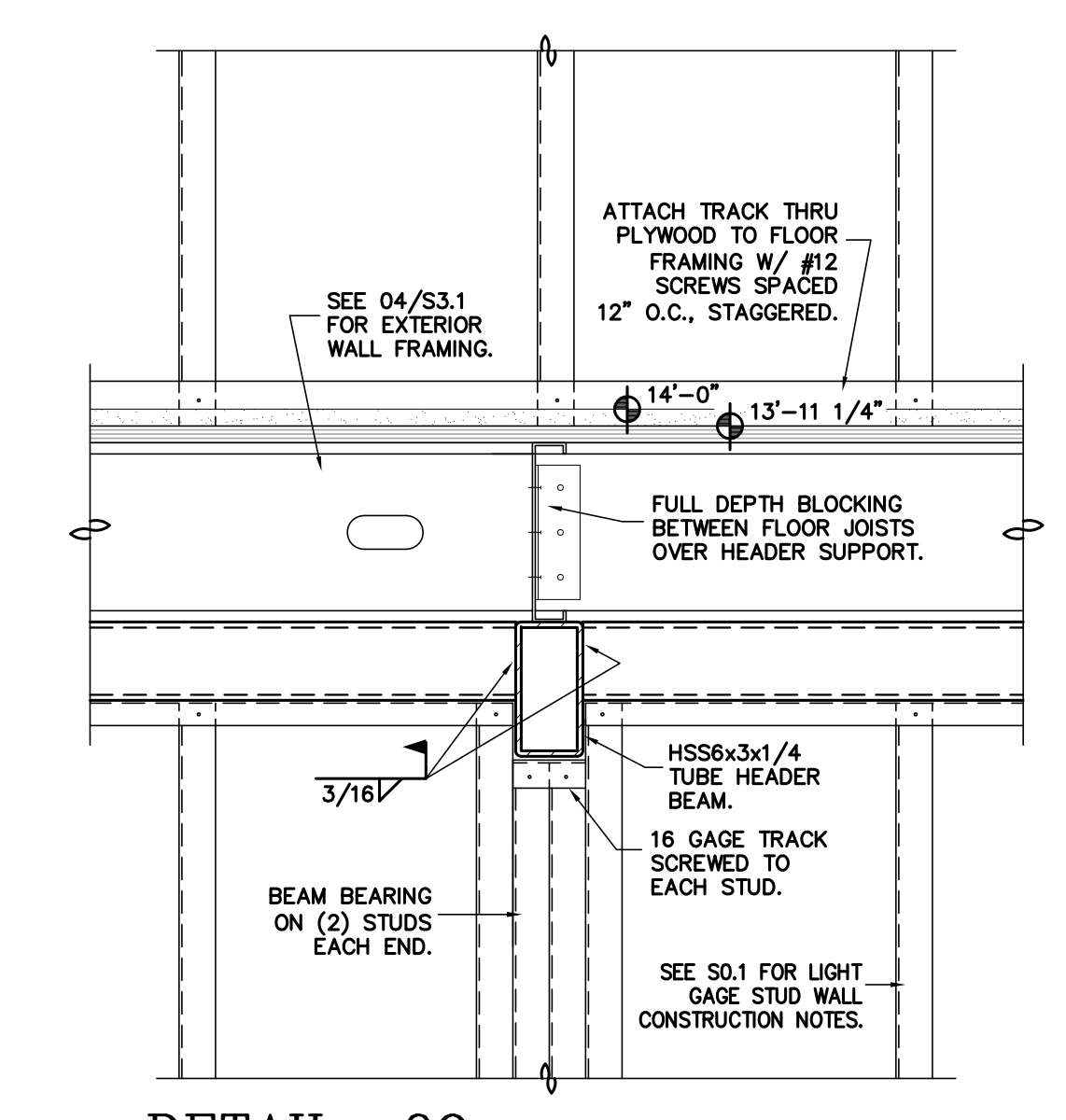
DETAIL 06 1 1/2" SCALE
 FLOOR FRAMING SECTION AT CHANGE IN JOIST DIRECTION



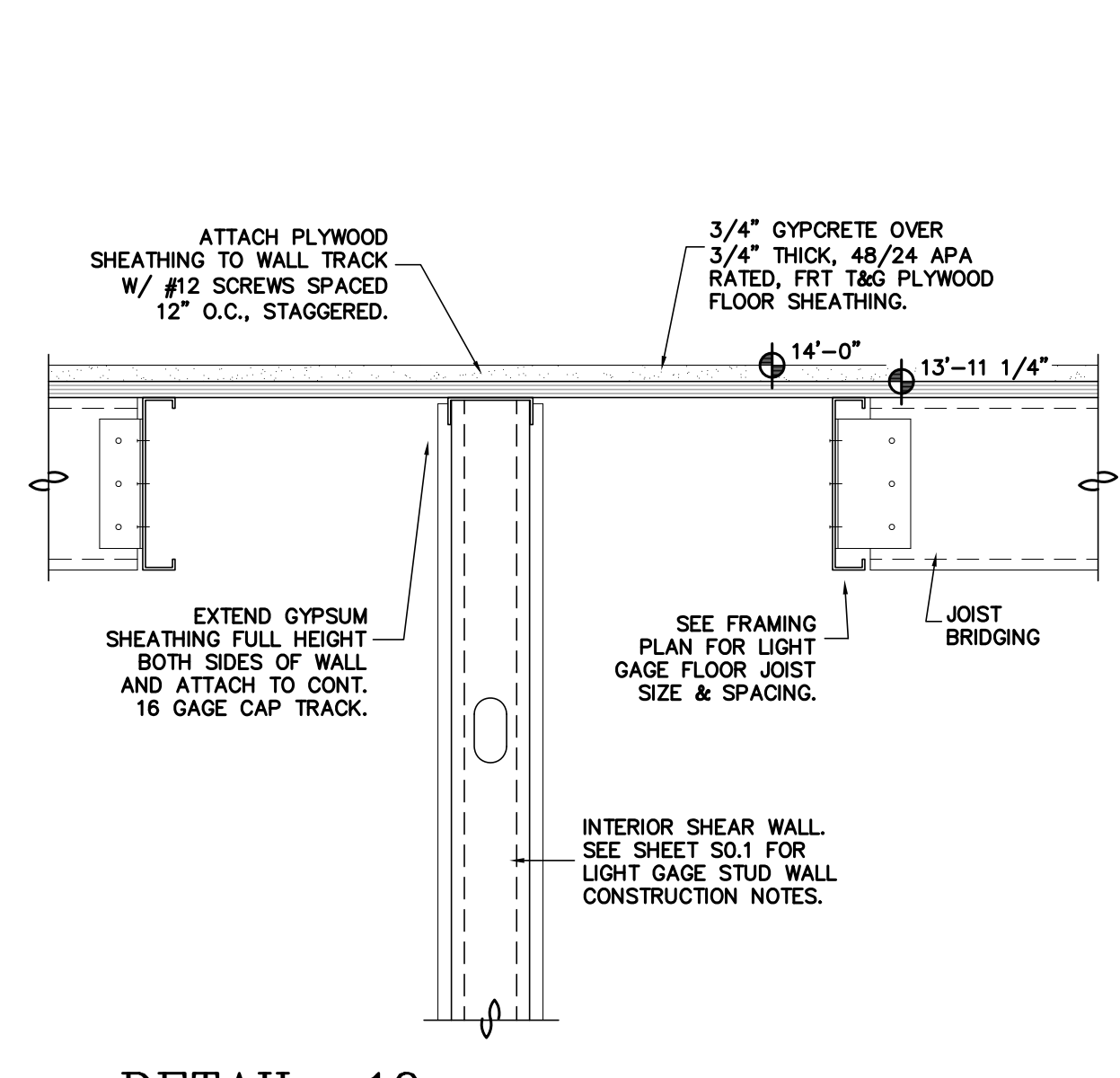
DETAIL 07 1 1/2" SCALE
 FLOOR FRAMING SECTION OVER BREAK ROOM



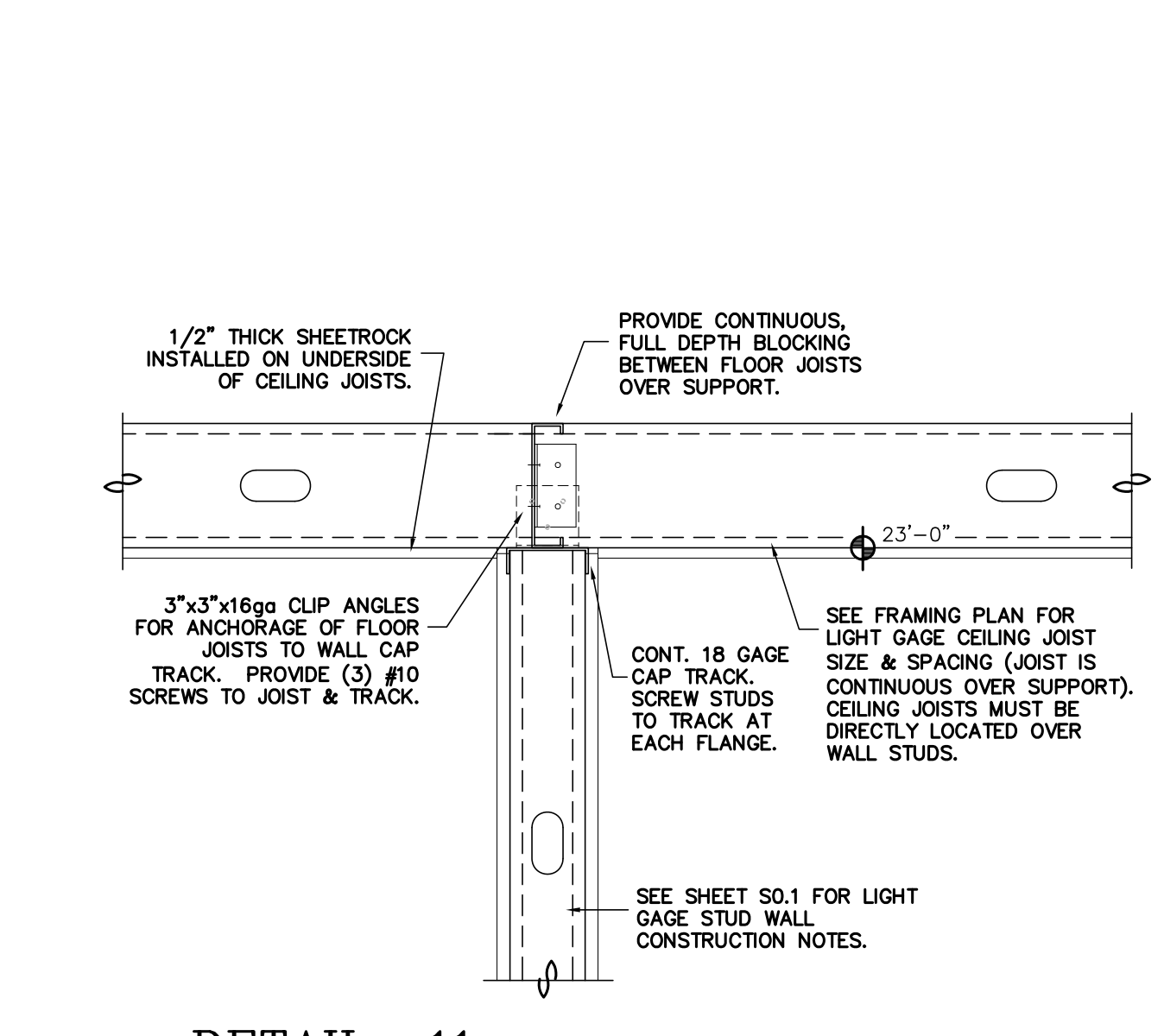
DETAIL 08 1 1/2" SCALE
 FLOOR JOIST BEARING AT HEADER BEAM



DETAIL 09 1 1/2" SCALE
 HEADER BEAM SUPPORT ON STUD WALL



DETAIL 10 1 1/2" SCALE
 FLOOR FRAMING SECTION THROUGH X-X DIRECTION SHEAR WALL



DETAIL 11 1 1/2" SCALE
 CEILING JOIST BEARING AT INTERIOR WALL