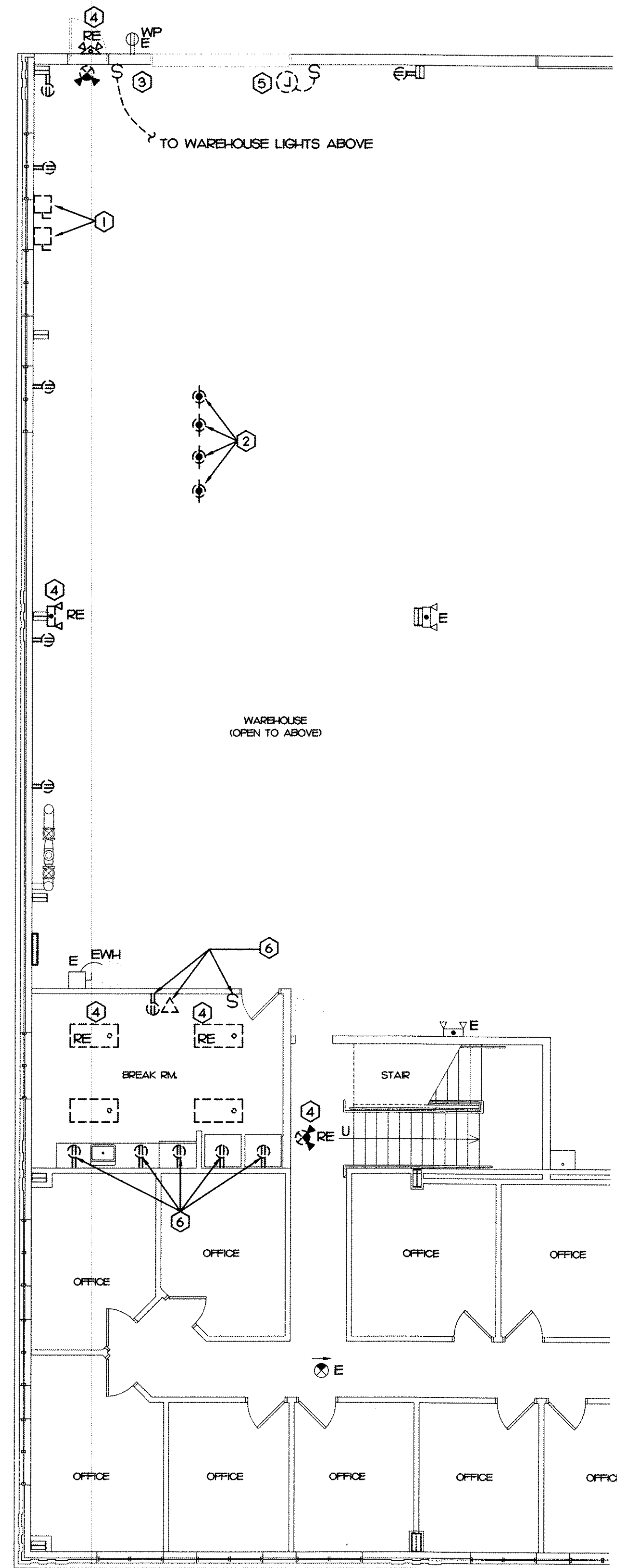
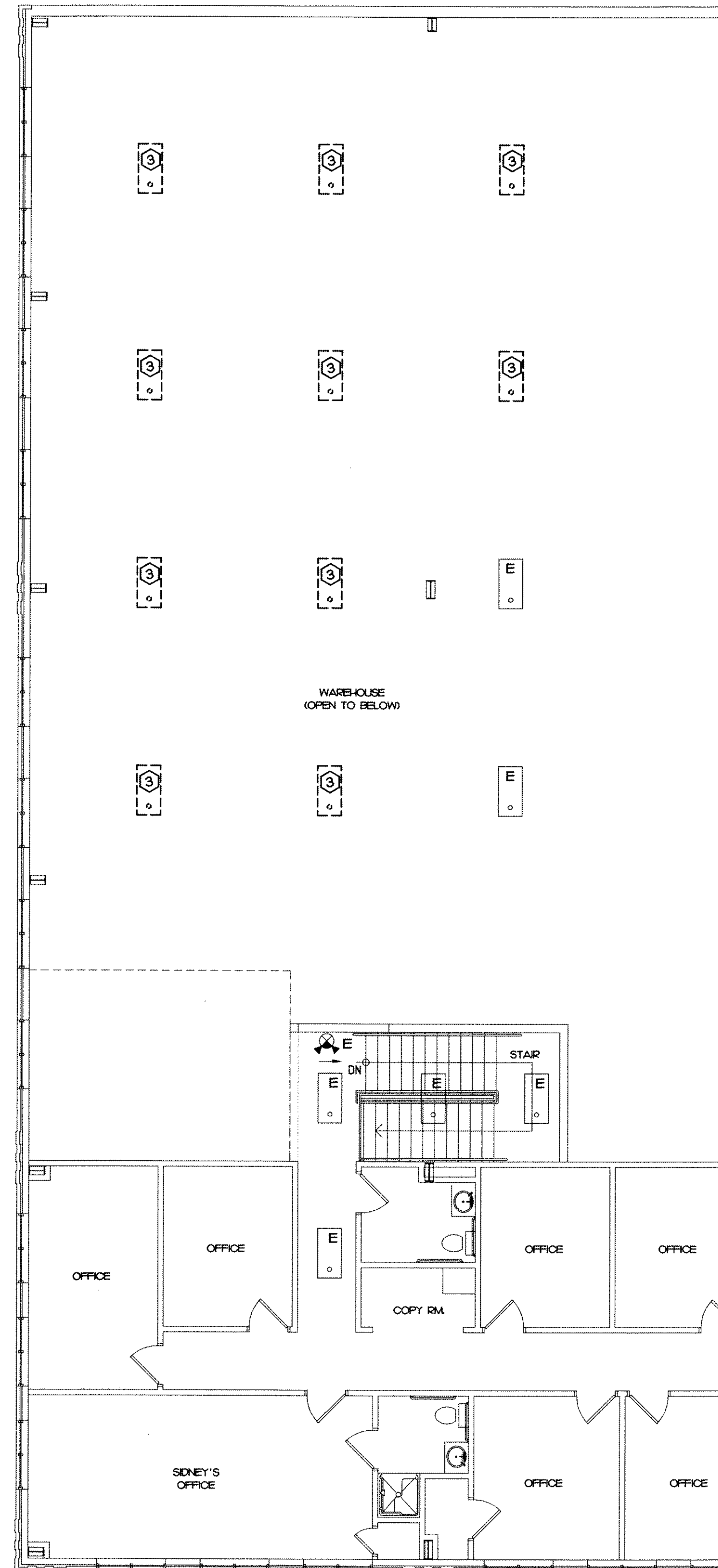


14032

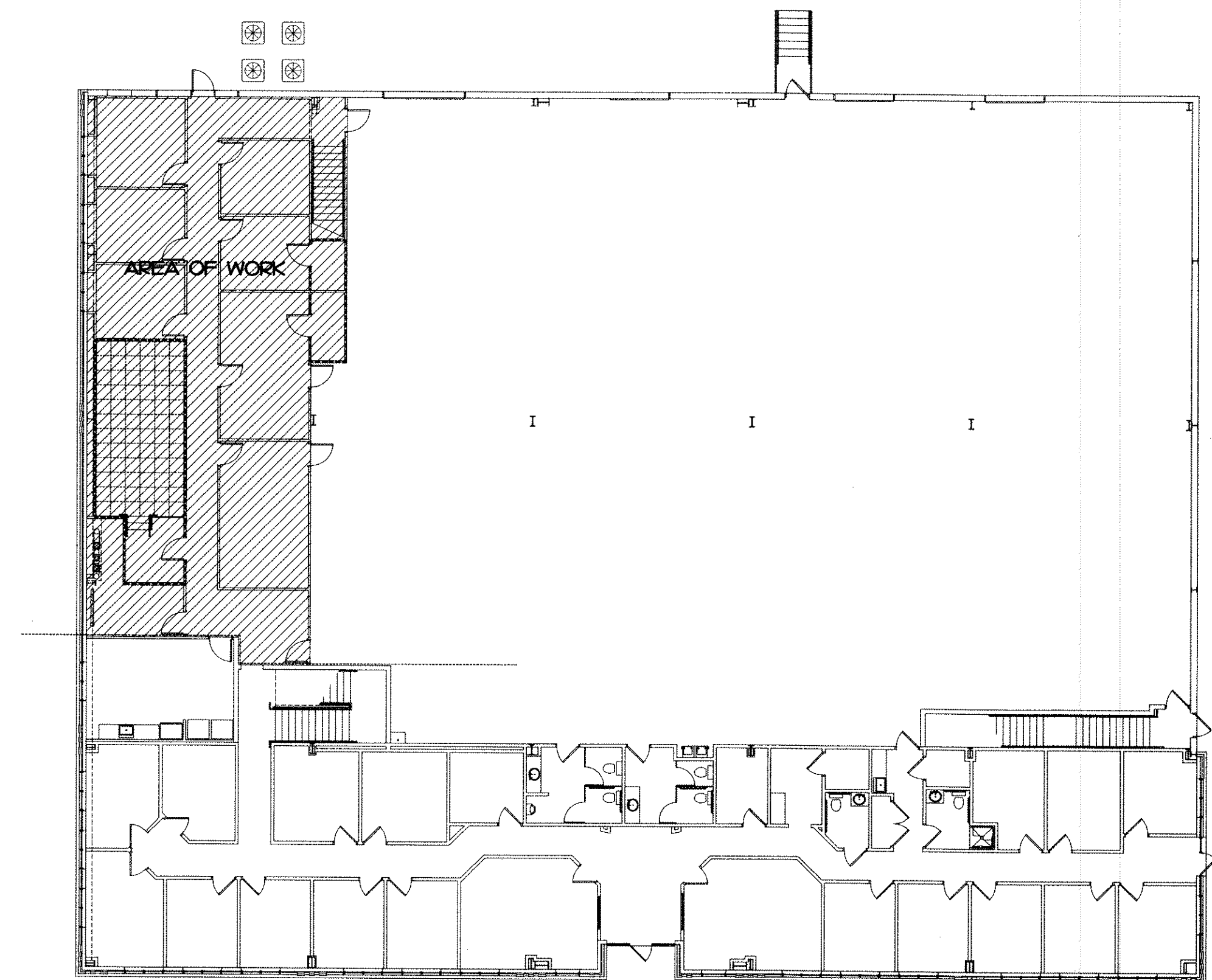
1 1ST FLOOR DEMOLITION PLAN
E.L.O. SCALE: 1/8" = 1'-0"



2 2ND FLOOR DEMOLITION PLAN
E.L.O. SCALE: 1/8" = 1'-0"



3 KEY PLAN
E.L.O. SCALE: 1/16" = 1'-0"



GENERAL NOTES

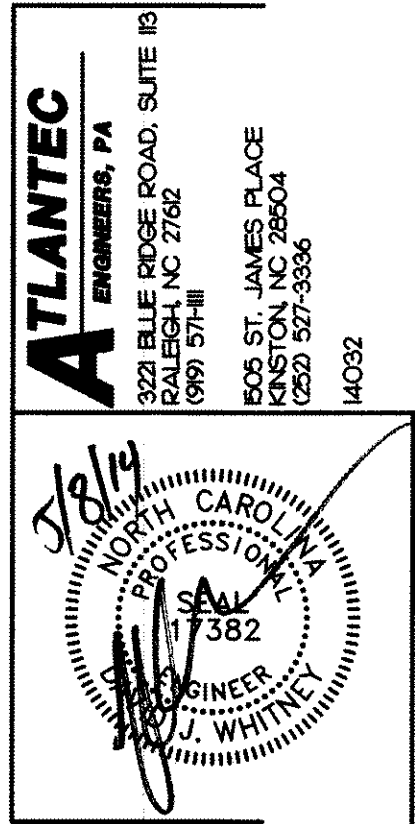
- DASHED LINES INDICATE DEMOLITION.
- TURN OVER ALL ELECTRICAL ITEMS DEMOLISHED TO OWNER.

KEY NOTES

- REMOVE EXISTING 30A, 3P STARTER/DISCONNECTS AND ASSOCIATED FEEDERS.
- REMOVE EXISTING CEILING MOUNTED CORD DROPS.
- REMOVE EXISTING SUSPENDED WAREHOUSE LIGHT FIXTURES AND ASSOCIATED SWITCH. REWIRE EXISTING TO REMAIN WAREHOUSE LIGHTING TO EXISTING CONTROL DEVICE. COORDINATE IN FIELD.
- RELOCATE EXISTING LIGHTING FIXTURE. NEW LOCATION SHOWN ON ELL.
- REMOVE POWER AND CONTROL TO EXISTING MOTORIZED ROLL-UP DOOR.
- RELOCATE EXISTING DEVICES TO ACCOMMODATE CONSTRUCTION OF NEW WALL IN FRONT OF EXISTING WALL. EXTEND BOXES AND CIRCUITS AND RE-INSTALL IN ORIGINAL LOCATION WITHIN NEW WALL.

Interior Alteration

POWER SECURE
1609 Heritage Commerce Ct
Wake Forest, North Carolina



MAURER ARCHITECTURE
115.5 EAST HARGETT STREET, SUITE 300
RALEIGH, NORTH CAROLINA 27601
TEL. 919-829-4969 FAX. 919-829-0860

DATE	04.07.14
DR.	SCB
CH.	DJW
PROJ. #	13049
REVISIONS	DATE
--	--/--

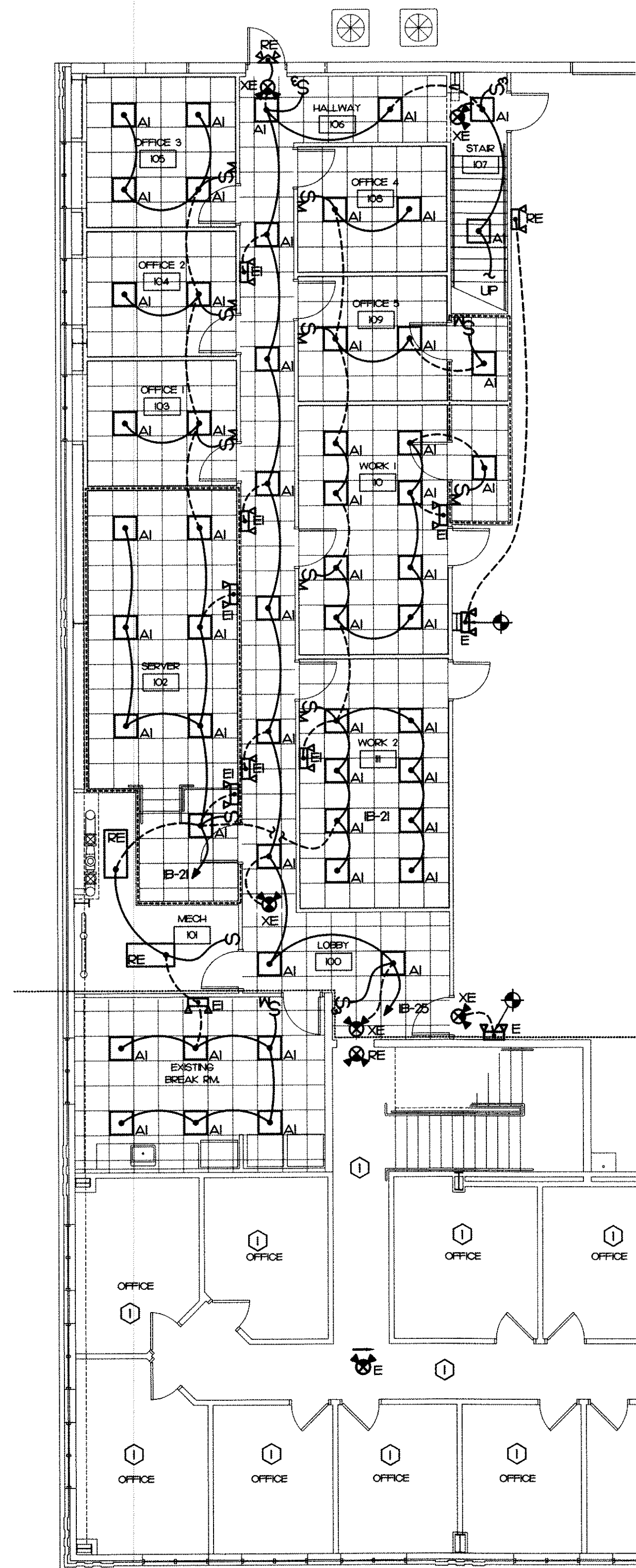
ELECTRICAL
DEMOLITION PLAN

E1.0

14032

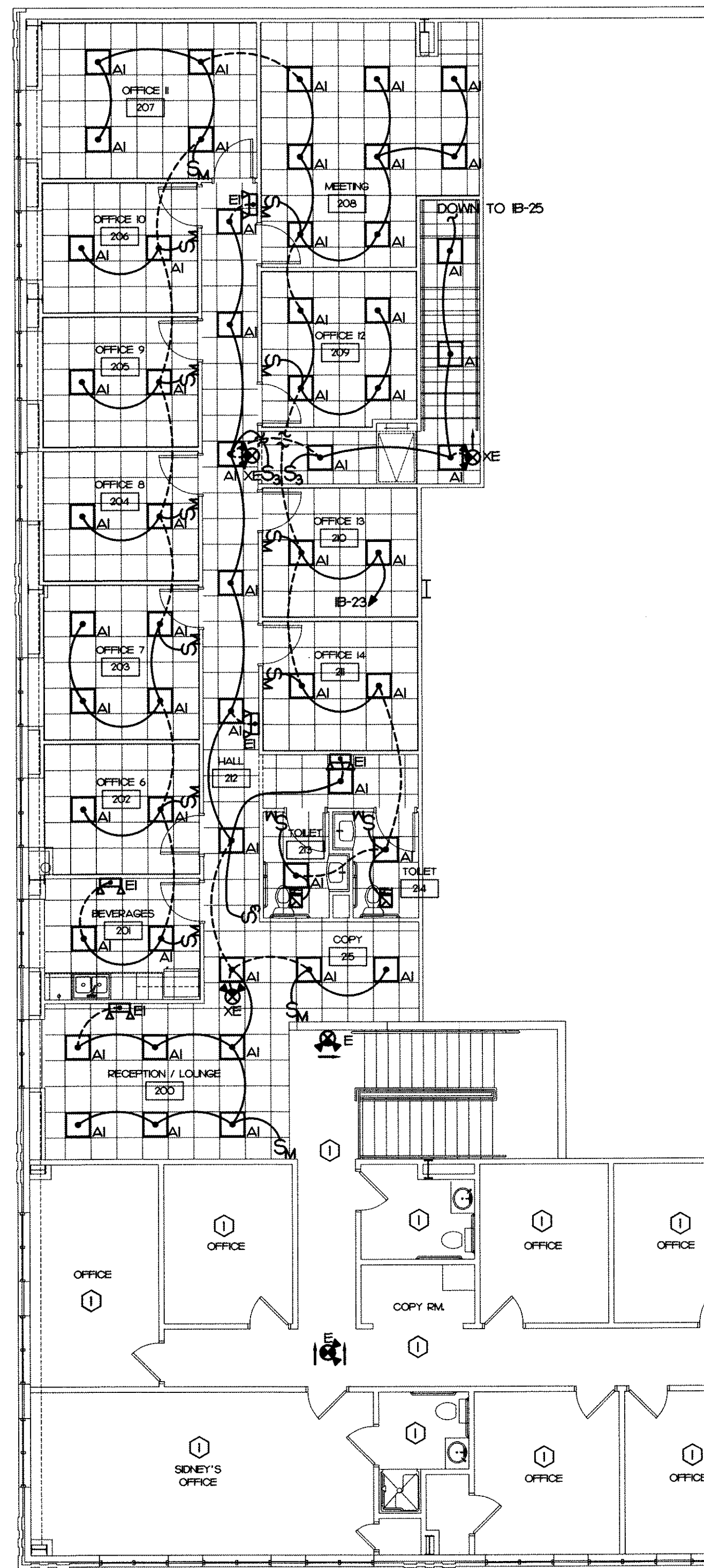
1 1ST FLOOR LIGHTING PLAN
EUI

SCALE: 1/8" = 1'-0"



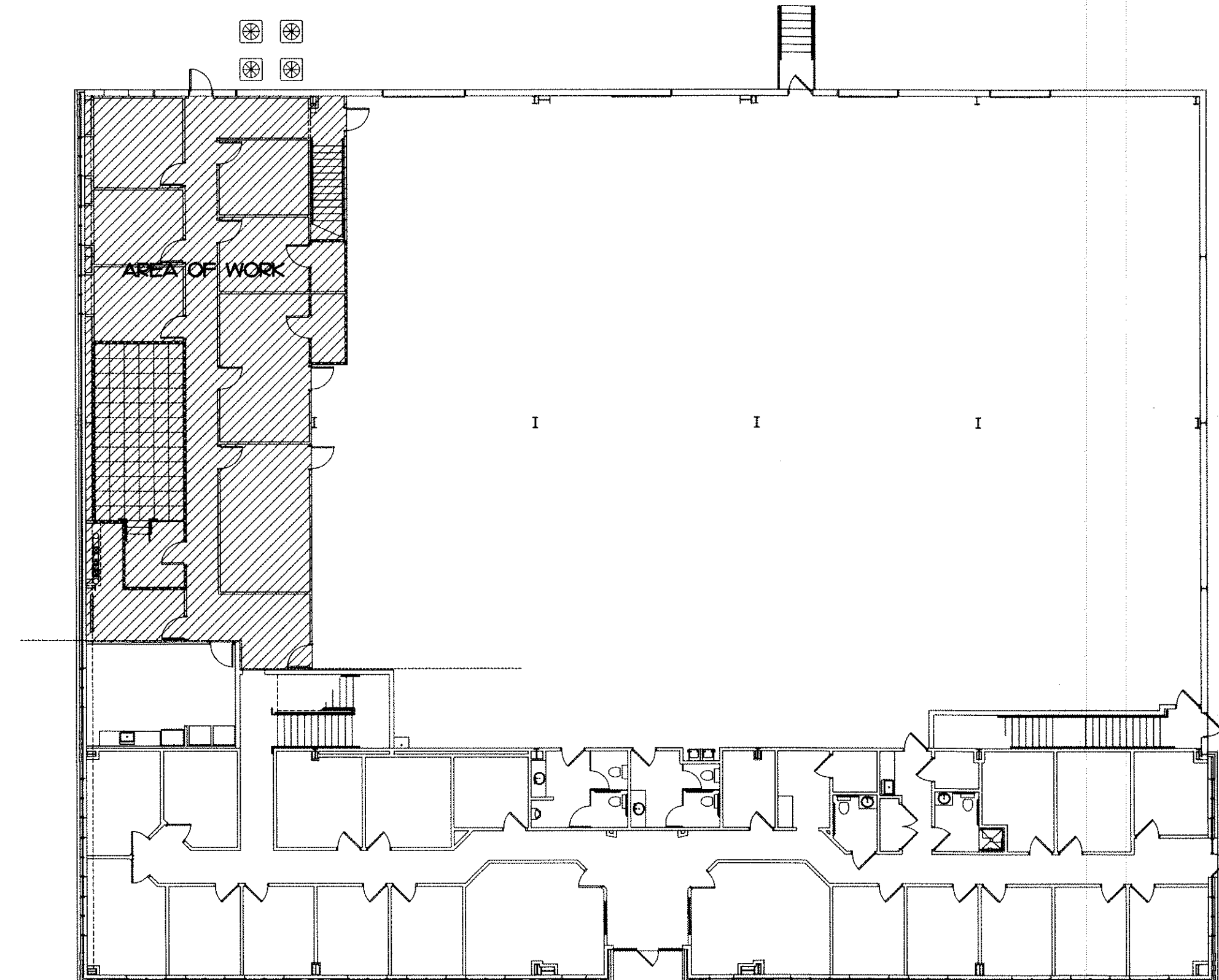
2 2ND FLOOR LIGHTING PLAN
EUI

1/8" = 1'-0"



3 KEY PLAN
EUI

1/6" = 1'-0"



GENERAL NOTES

1. ALL TYPE 'AI' LUMINAIRES PROVIDED BY OWNER, INSTALLED BY CONTRACTOR.

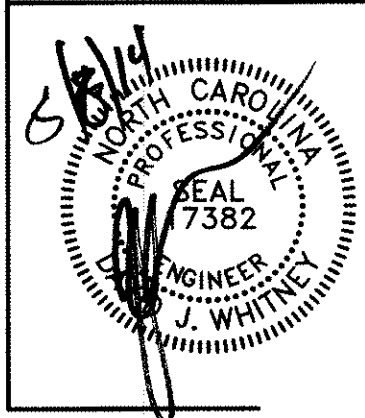
KEY NOTES

- ① NO WORK THIS AREA

Interior Alteration

POWER SECURE
1609 Heritage Commerce Ct
Wake Forest, North Carolina

ATLANTEC
ENGINEERS, P.A.
3221 BLUE RIDGE ROAD, SUITE 103
RALEIGH, NC 27602
(919) 571-1111
5005 ST. JAMES PLACE
KINSTON, NC 28504
(252) 327-5555
14032

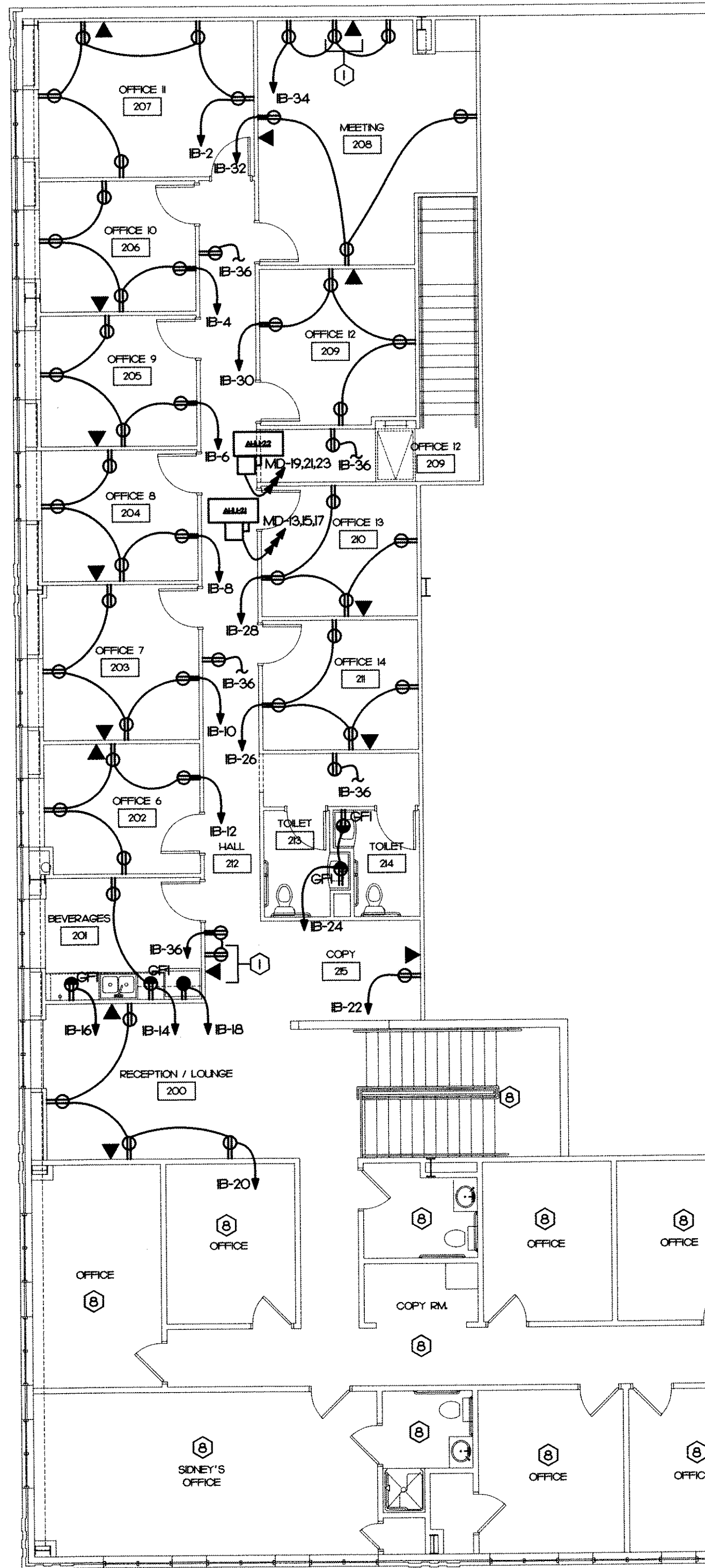
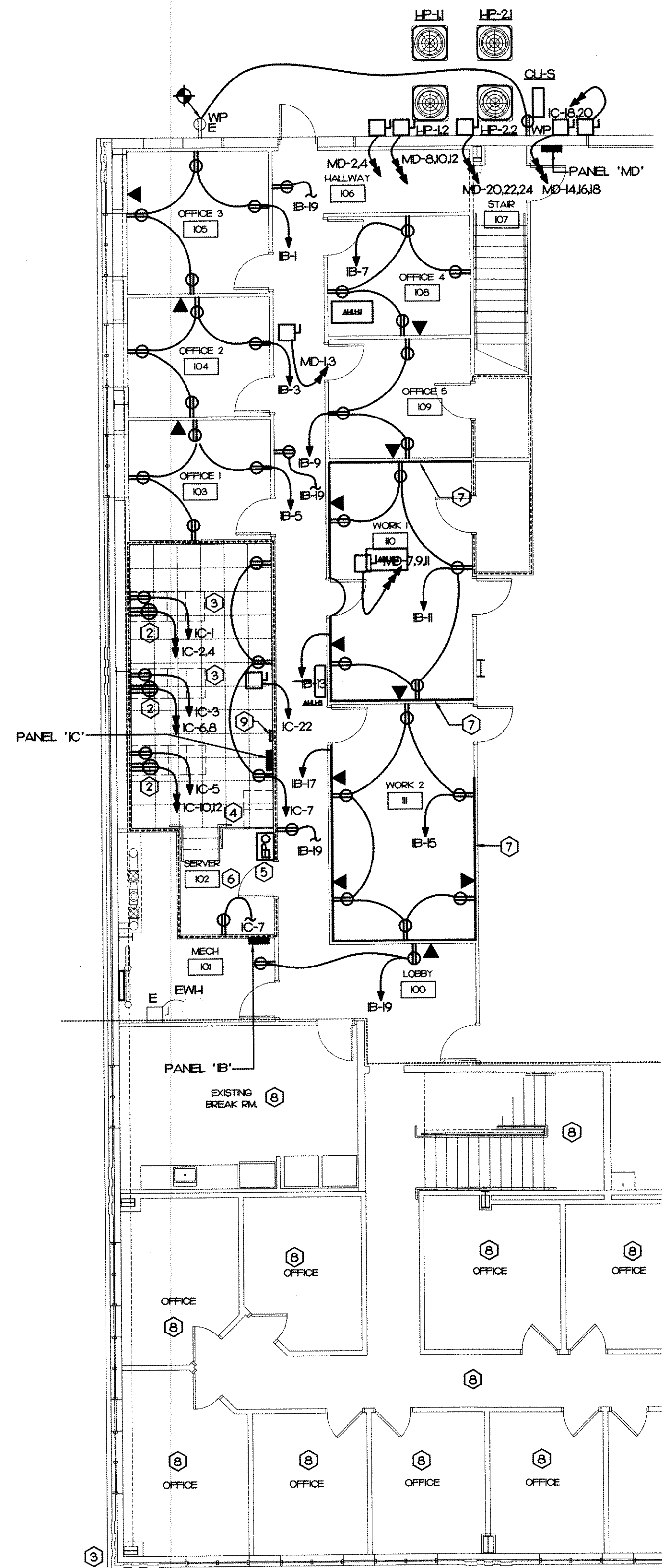


MAURER ARCHITECTURE
115.5 EAST HARGETT STREET, SUITE 300
RALEIGH, NORTH CAROLINA 27601
TEL. 919-829-4969 FAX. 919-829-0860

DATE	05.05.14
DR.	SCB
CH.	DJW
PROJ. #	13049
REVISIONS	DATE
--	--/--

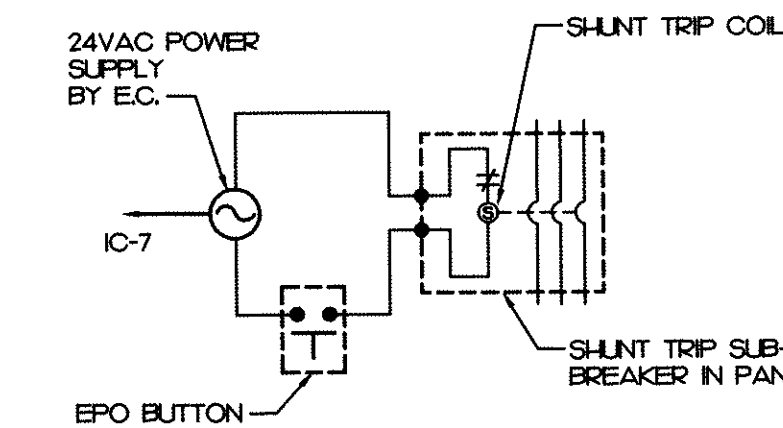
ELECTRICAL
LIGHTING PLAN

E1.1

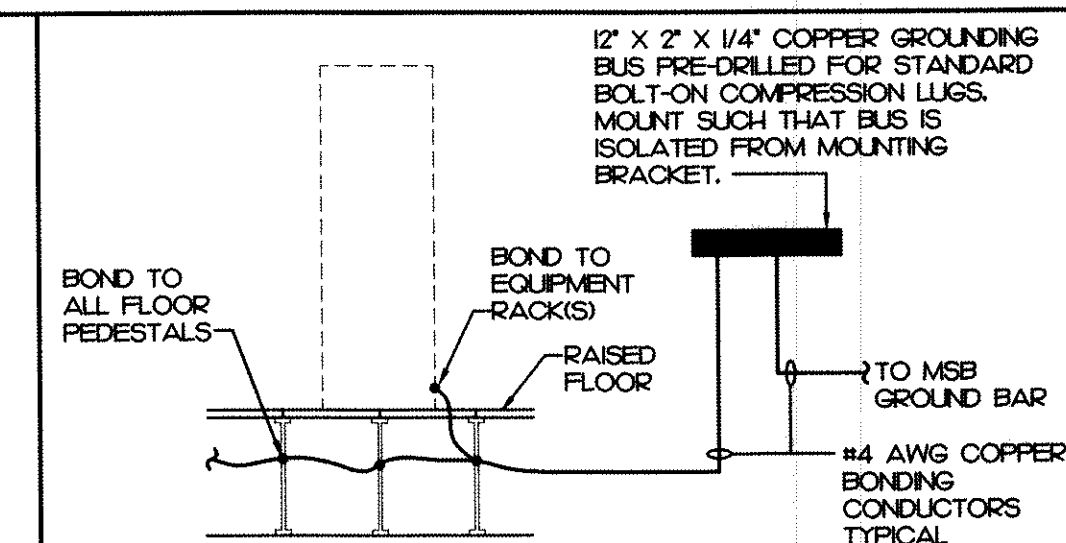


KEY NOTES

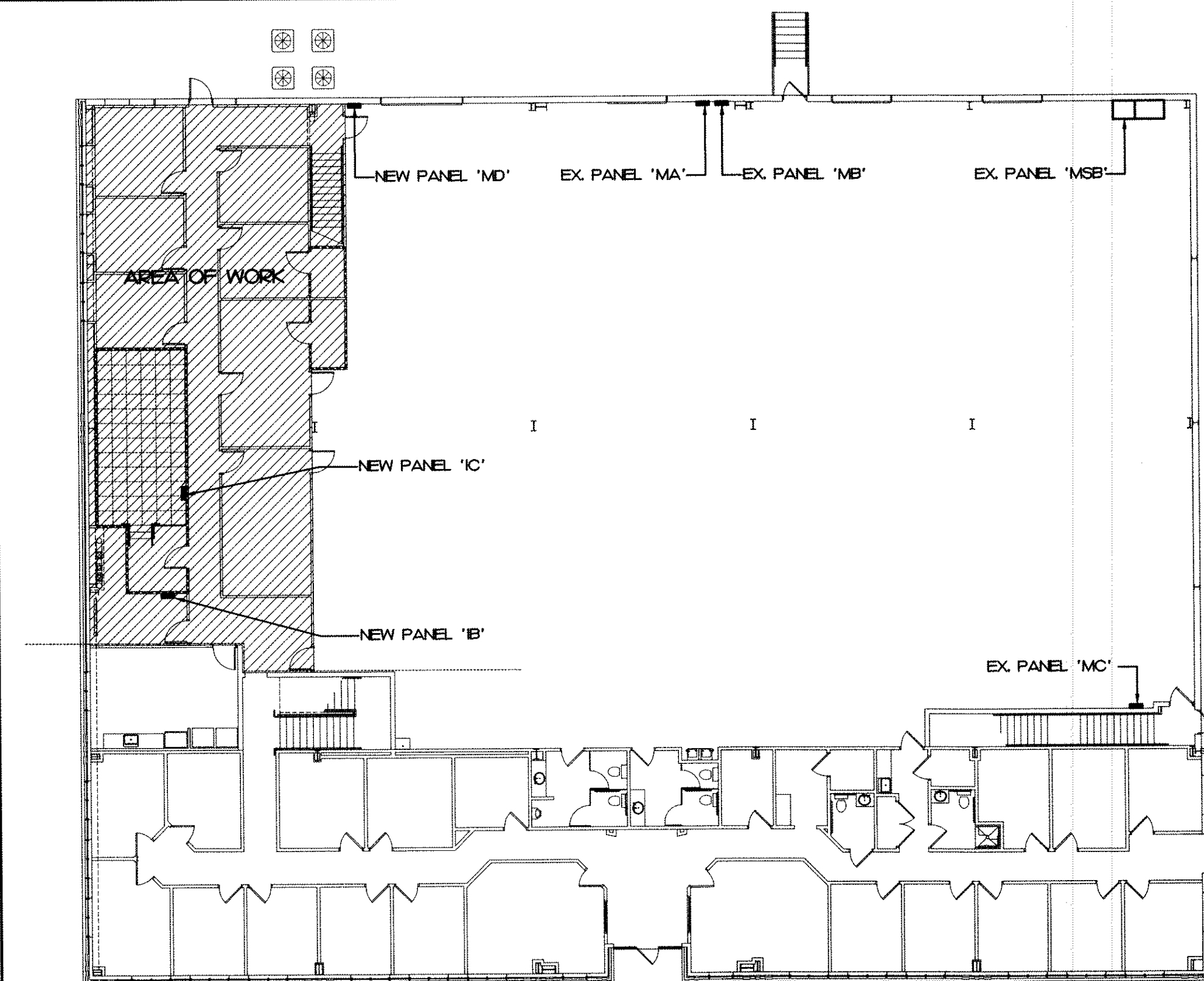
- POWER AND DATA OUTLET MOUNTED 84" AFF FOR WALL MOUNTED FLAT PANEL DISPLAY.
- L630R RECEPTACLE. COORDINATE LOCATION WITH OWNER.
- OWNER FURNISHED IT RACKS, QUANTITY AND CONFIGURATION TO BE VERIFIED.
- FUTURE UPS SYSTEM TO BE INSTALLED UNDER A SEPARATE PERMIT.
- EMERGENCY POWER OFF EQUAL TO SAFETY TECHNOLOGY® SS-222FO OR EQUAL WITH CLEAR COVER. REFER TO DETAIL 4/E12.
- SERVER ROOM HAS RAISED ACCESS FLOOR (NON-PLENUM). REFER TO DETAIL 5/E12 FOR GROUNDING REQUIREMENTS.
- HUBBELL® HBLALL24GB68 6" 1-CIRCUIT ALUMINUM PLUG MOLD SECTIONS WITH SINGLE RECEPTACLES MOUNTED 18" O.C. PROVIDE ALL NECESSARY INSIDE CORNERS, ENTRANCE FITTINGS, SUPPORTS, COUPLINGS, COVERS AND OTHER FITTINGS NECESSARY FOR PLUGMOLD TO BE INSTALLED CONTINUOUSLY. PROVIDE MATCHING H-GANG SURFACE MOUNTED BOX WITH BLANK COVER TO CONNECT ENTRANCE FITTING. COORDINATE ENTRANCE FEED BOX LOCATIONS WITH ARCHITECT/OWNER. HOMERUNS FED TO BACK OF ENTRANCE BOXES FROM CONCEALED CONDUIT IN WALL.
- NO WORK THIS AREA.
- GROUND BUS. SEE DETAIL 5/E12.



4 EPO WIRING DIAGRAM
E12 NO SCALE



5 SERVER ROOM GROUNDING DETAIL
E12 NO SCALE



3 KEY PLAN
E12 1/8" = 1'-0"

Interior Alteration
POWER SECURE
1609 Heritage Commerce Ct
Wake Forest, North Carolina

ATLANTEC
ENGINEERS, P.A.
302 BLUE RIDGE ROAD, SUITE 118
RALEIGH, NC 27602
(919) 571-1111
5005 ST. JAMES PLACE
KINSTON, NC 28604
(252) 527-5336
14032

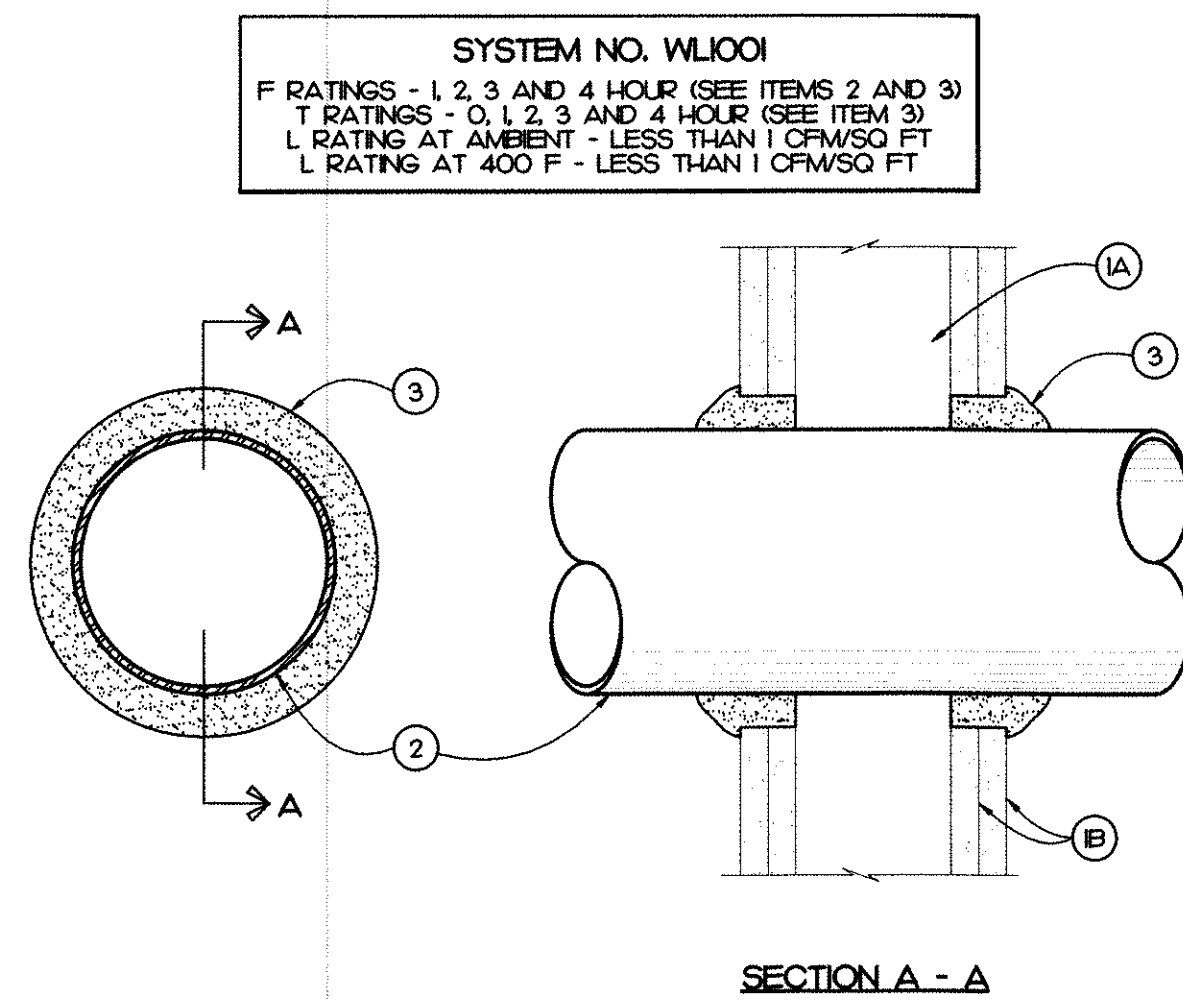
MAURER ARCHITECTURE
1115.5 EAST HARGETT STREET, SUITE 300
RALEIGH, NORTH CAROLINA 27601
TEL. 919-829-4969 FAX. 919-829-0860

MAURER ARCHITECTURE
1115.5 EAST HARGETT STREET, SUITE 300
RALEIGH, NORTH CAROLINA 27601
TEL. 919-829-4969 FAX. 919-829-0860

DATE 05.05.14
DR. SCB
CH. DJW
PROJ. # 13049
REVISIONS DATE
-- --/--/--

ELECTRICAL
POWER/TELECOM PLAN

E1.2



1. **WALL ASSEMBLY** - THE 1, 2, 3 OR 4 HOUR FIRE-RATED GYPSUM WALLBOARD/STUD WALL ASSEMBLY SHALL BE CONSTRUCTED OF THE MATERIALS AND IN THE MANNER DESCRIBED IN THE INDIVIDUAL U300 OR U400 SERIES WALL OR PARTITION DESIGNS IN THE UL FIRE RESISTANCE DIRECTORY AND SHALL INCLUDE THE FOLLOWING CONSTRUCTION FEATURES:
- STUDS** - WALL FRAMING MAY CONSIST OF EITHER WOOD STUDS (MAXIMUM 2 HOUR FIRE RATED ASSEMBLIES) OR STEEL CHANNEL STUDS. WOOD STUDS TO CONSIST OF NOMINAL 2" x 4" LUMBER SPACED 16" ON CENTER WITH NOMINAL 2" x 4" LUMBER END PLATES AND CROSS BRACES. STEEL STUDS TO BE MINIMUM 3 5/8" WIDE x 1 3/8" DEEP CHANNELS SPACED MAXIMUM 24" ON CENTER.
 - GYPSUM BOARD*** - NOMINAL 1/2" OR 5/8" THICK, 4" WIDE WITH SQUARE OR TAPERED EDGES, THE GYPSUM WALLBOARD TYPE, THICKNESS, NUMBER OF LAYERS, FASTENER TYPE AND SHEET ORIENTATION SHALL BE AS SPECIFIED IN THE INDIVIDUAL U300 OR U400 SERIES DESIGN IN THE UL FIRE RESISTANCE DIRECTORY. MAXIMUM DIAMETER OF OPENING IS 26".
2. **THROUGH PENETRANT** - ONE METALLIC PIPE, CONDUIT OR TUBING INSTALLED EITHER CONCENTRICALLY OR ECCENTRICALLY WITHIN THE FIRESTOP SYSTEM, THE ANNULAR SPACE BETWEEN PIPE, CONDUIT OR TUBING AND PERIPHERY OF OPENING SHALL BE MINIMUM OF 0" (POINT CONTACT) TO MAXIMUM 2" PIPE, CONDUIT OR TUBING TO BE RIGIDLY SUPPORTED ON BOTH SIDES OF WALL ASSEMBLY. THE FOLLOWING TYPES AND SIZES OF METALLIC PIPES, CONDUITS OR TUBING MAY BE USED:
- STEEL PIPE** - NOMINAL 24" DIAMETER (OR SMALLER) SCHEDULE 10 (OR HEAVIER) STEEL PIPE.
 - IRON PIPE** - NOMINAL 24" DIAMETER (OR SMALLER) SERVICE WEIGHT (OR HEAVIER) CAST IRON SOIL PIPE, NOMINAL 12" DIAMETER (OR SMALLER) OR CLASS 50 (OR HEAVIER) DUCTILE IRON PRESSURE PIPE.
 - CONDUIT** - NOMINAL 6" DIAMETER (OR SMALLER) STEEL CONDUIT OR NOMINAL 4" DIAMETER (OR SMALLER) STEEL ELECTRICAL METALLIC TUBING.
 - COPPER TUBING** - NOMINAL 6" DIAMETER (OR SMALLER) TYPE L (OR HEAVIER) COPPER TUBING.
 - COPPER PIPE** - NOMINAL 6" DIAMETER (OR SMALLER) REGULAR (OR HEAVIER) COPPER PIPE.
- F. **THROUGH PENETRATING PRODUCT*** - FLEXIBLE METAL PIPING - THE FOLLOWING TYPES OF STEEL FLEXIBLE METAL GAS PIPING MAY BE USED:
- NOMINAL 2" DIAMETER (OR SMALLER) STEEL FLEXIBLE METAL GAS PIPING. PLASTIC COVERING ON PIPING MAY OR MAY NOT BE REMOVED ON BOTH SIDES OF FLOOR OR WALL ASSEMBLY.
OMEGA FLEX INC
 - NOMINAL 1" DIAMETER (OR SMALLER) STEEL FLEXIBLE METAL GAS PIPING. PLASTIC COVERING ON PIPING MAY OR MAY NOT BE REMOVED ON BOTH SIDES OF FLOOR OR WALL ASSEMBLY.
TITELFLEX CORP
A BUNDY CO
 - NOMINAL 1" DIAMETER (OR SMALLER) STEEL FLEXIBLE METAL GAS PIPING. PLASTIC COVERING ON PIPING MAY OR MAY NOT BE REMOVED ON BOTH SIDES OF FLOOR OR WALL ASSEMBLY.
WARD MFG INC
3. **FILL VOID OR CAVITY MATERIAL** - CAULK OR SEALANT - MINIMUM 5/8" x 1/4" x 7/8" AND 2 1/2" THICKNESS OF CAULK FOR 1, 2, 3 AND 4 HOUR RATED ASSEMBLIES, RESPECTIVELY, APPLIED WITHIN ANNULUS, FLUSH WITH BOTH SURFACES OF WALL. MINIMUM 1/4" DIAMETER BEAD OF CAULK APPLIED TO GYPSUM BOARD/PENETRANT INTERFACE AT POINT CONTACT LOCATION ON BOTH SIDES OF WALL. THE HOURLY F RATING OF THE FIRESTOP SYSTEM IS DEPENDENT UPON THE HOURLY FIRE RATING OF THE WALL ASSEMBLY IN WHICH IT IS INSTALLED, AS SHOWN IN THE FOLLOWING TABLE. THE HOURLY T RATING OF THE FIRESTOP SYSTEM IS DEPENDENT UPON THE TYPE OR SIZE OF THE PIPE OR CONDUIT AND THE HOURLY FIRE RATING OF THE WALL ASSEMBLY IN WHICH IT IS INSTALLED, AS TABULATED BELOW:
- | MAXIMUM PIPE OR CONDUIT DIAMETER INCHES | F RATING HOUR | T RATING HOUR |
|---|---------------|---------------|
| 1 | 1 OR 2 | 0, 1 OR 2 |
| 1 | 3 OR 4 | 3 OR 4 |
| 4 | 1 OR 2 | 0 |
| 6 | 3 OR 4 | 0 |
| 12 | 1 OR 2 | 0 |
- *WHEN COPPER PIPE IS USED, T RATING IS 0 HOUR.
3M COMPANY - CP 25WB+ CAULK OR FB-3000 WT SEALANT.
*BEARING THE UL CLASSIFICATION MARKING

GENERAL NOTES

- THE CONTRACTOR SHALL REFER TO THE ARCHITECTURAL PLANS FOR FLOOR PLAN DIMENSIONS. DO NOT SCALE THESE DRAWINGS.
- THE ELECTRICAL CONTRACTOR SHALL COORDINATE ANY AND ALL WORK WITH OTHER TRADES INVOLVED IN THE PROJECT, PRIOR TO THE INSTALLATION OF HIS EQUIPMENT, SO AS TO AVOID CONFLICTS DURING CONSTRUCTION AND TO ALLOW FOR OPTIMUM MAINTENANCE AND WORKING SPACE.
- USE OF THE CONDUIT SYSTEM FOR EQUIPMENT GROUNDING SHALL NOT BE ACCEPTABLE. A SEPARATE GREEN GROUND WIRE SHALL BE RUN WITH THE CIRCUIT CONDUCTORS IN EACH CONDUIT.
- ALL BREAKER SIZES, SHOWN FOR MECHANICAL EQUIPMENT, SHALL BE VERIFIED BEFORE THE PURCHASE OR INSTALLATION OF SAID EQUIPMENT, WITH THE EQUIPMENT SUPPLIER AND THE MECHANICAL CONTRACTOR.
- ALL WORK AND MATERIAL SHALL BE PROVIDED IN ACCORDANCE WITH THE STATE, LOCAL AND NATIONAL CODES AND ORDINANCES.
- EACH CONTRACTOR SHALL PROVIDE HIS OWN SUPPORT OF ALL DEVICES AND EQUIPMENT PROVIDED BY HIM AND SHALL SUPPORT SUCH EQUIPMENT PER APPROVED GOVERNING CODES OR PER APPROVAL OF THE ENGINEER. UNACCEPTABLE WORKMANSHIP OR MATERIALS SHALL BE REPLACED AT THE REQUEST OF THE ENGINEER AT THE CONTRACTOR'S EXPENSE.
- THE MOUNTING HEIGHTS AND LOCATIONS OF ALL WALL MOUNTED OUTLETS AND JUNCTION BOXES SHALL BE REVIEWED AND COORDINATED WITH THE ARCHITECT, PRIOR TO INSTALLATION FOR USE WITH THE ACTUAL EQUIPMENT, CASEWORK, AND MILLWORK TO BE FURNISHED.
- THE ELECTRICAL CONTRACTOR SHALL PROVIDE ALL NECESSARY DISCONNECTS, SWITCHES, AND RECEPTACLES UNDER THE ELECTRICAL BID AND SHALL INCLUDE ALL NECESSARY CIRCUITS TO AND FINAL CONNECTIONS TO THE EQUIPMENT PROVIDED BY ALL SUPPLIERS. SEE DETAILS FOR CONNECTION TO EQUIPMENT PROVIDED BY MECHANICAL AND PLUMBING CONTRACTORS.
- PENETRATION***
- WHERE ELECTRICAL EQUIPMENT PENETRATES RATED WALLS AND CEILINGS, EXTERIOR WALLS, THEY SHALL BE PROPERLY SEALED PER APPROVED UL METHODS.
- WHERE ELECTRICAL EQUIPMENT PENETRATES EXTERIOR WALLS, THEY SHALL BE PROPERLY SEALED WITH METHODS APPROVED BY THE ENGINEER. SUBMIT DETAIL OF PROPOSED SEALING METHODS.
- ALL PERMITS AND INSPECTION FEES SHALL BE SECURED AND PAID BY THE ELECTRICAL CONTRACTOR.
- ALL WORK SHALL BE PERFORMED BY A LICENSED ELECTRICAL CONTRACTOR.
- AS BUILT DRAWINGS SHALL BE GIVEN TO THE OWNER AT THE COMPLETION OF THE PROJECT.
- THE CONTRACTOR SHALL VERIFY THE CEILING TYPES WITH THE GENERAL CONTRACTOR PRIOR TO THE PURCHASE OF ANY LIGHT FIXTURES SO THAT THE PROPER TRIM WILL BE PROVIDED FOR ALL FIXTURES. ANY DIFFERENCES WILL BE THE RESPONSIBILITY OF THIS CONTRACTOR.
- ALL WIRE SIZES INDICATED ON THE PANEL SCHEDULES ARE BASED ON 75 DEGREE COPPER THIRTY-TWO WIRE. ALL WIRE TERMINALS AND EQUIPMENT SHALL BE LISTED AND APPROVED FOR 75°C. ONLY THIRTY-TWO WIRE SHALL BE INSTALLED IN WET AND EXTERIOR LOCATION.
- MINIMUM CONDUIT SIZE SHALL BE 1/2" AND MINIMUM WIRE SIZE SHALL BE #12 AWG.
- METAL-CLAD CABLE (TYPE MC) AND ARMORED CABLE (TYPE AC) IS AN ACCEPTABLE WIRING METHOD SUBJECT TO RESTRICTIONS OF THE NEC. TYPES "MC" OR "AC" CABLE SHALL NOT BE USED WHEN PENETRATING RATED WALLS.
- THE MAXIMUM NUMBER OF HOMERUNS IN A CONDUIT SHALL NOT EXCEED THREE (3). BREAKERS FEEDING CIRCUITS WITH SHARED NEUTRAL SHALL BE SWITCHED TOGETHER.
- WHERE OUTLETS ARE SHOWN BACK TO BACK ON RATED WALLS, STAGGER OUTLETS SO THAT THEY ARE SEPARATED BY A MINIMUM OF 24".
- FOR ALL RECEPTACLES LOCATED ABOVE COUNTER TOP, MOUNTING HEIGHT SHALL COMPLY WITH ANSI A17.1 SECTION 308. E.C. SHALL FIELD VERIFY CASEWORK DETAIL WITH ARCHITECT PRIOR TO ROUGH-IN.

RENOVATION NOTES

- EXISTING ELECTRICAL EQUIPMENT AND DEVICES NOTED ON THESE PLANS WERE FOUND BY NON-DESTRUCTIVE FIELD OBSERVATIONS. NOT ALL EXISTING ELECTRICAL EQUIPMENT, CONDUIT, DEVICES, WIRING, ETC. ARE SHOWN ON THE PLANS. THE ELECTRICAL CONTRACTOR SHALL BE RESPONSIBLE FOR A COMPLETE ELECTRICAL DEMOLITION NOTED OR IMPLIED ON THESE PLANS.
- ALL ABANDONED AND UNUSED CABLES IN HOLLOW SPACES, VERTICAL SHAFTS, AND VENTILATION OR AIR-HANDLING DUCTS SHALL BE REMOVED PER NEC 725.3(B), 760.3(A), 770.3(A), 800.52(B), 820.52(B).
- PRIOR TO CONNECTING ANY NEW RECEPTACLES TO EXISTING CIRCUITS, THE ELECTRICAL CONTRACTOR SHALL FIELD VERIFY THAT NO MORE THAN 10 RECEPTACLES ARE CONNECTED TO A 20 AMP CIRCUIT. AFTER RECONNECTING ALL NEW AND RELOCATED LIGHT FIXTURES, THE ELECTRICAL CONTRACTOR SHALL MEASURE THE CONNECTED LOAD FOR EACH LIGHTING CIRCUIT TO INSURE THAT NO MORE THAN 16 AMPS IS CONNECTED TO A 20 AMP CIRCUIT. THE CONTRACTOR SHALL NOTIFY THE ENGINEER IF EITHER OF THE ABOVE CONDITIONS ARE FOUND.
- THE ELECTRICAL CONTRACTOR IS RESPONSIBLE FOR MAINTAINING CIRCUIT CONTINUITY TO ALL LIGHTING DEVICES AND EQUIPMENT NOT SUBJECT TO REMOVAL. PROVIDE ADDITIONAL CONDUIT AND WIRING AS REQUIRED.
- RELOCATE ALL EXISTING CIRCUITS FOUND PASSING THROUGH THE AREA OF CONSTRUCTION WHICH ARE PRESENTLY IN USE IN OTHER PARTS OF THE BUILDING UNAFFECTED BY THIS PROJECT PHASE. ELECTRICAL CONTRACTOR IS RESPONSIBLE FOR MAINTAINING THE CONTINUITY OF SERVICE AND GROUNDING OF SUCH EXISTING CIRCUITS AND SHALL CONCEAL THEM ABOVE NEW CEILINGS.
- WHERE EXISTING EQUIPMENT AND DEVICES ARE SHOWN TO BE REMOVED, THE ELECTRICAL CONTRACTOR SHALL REMOVE ALL OF THE ASSOCIATED CONDUIT AND CONDUCTORS NOT REMAINING IN OPERATION BACK TO THEIR RESPECTIVE SOURCE OR TO THE POINT ON A SHARED CIRCUIT FROM WHERE THE EQUIPMENT OR DEVICE IS SERVED.
- ELECTRICAL CONTRACTOR SHALL COORDINATE WITH GENERAL CONTRACTOR TO PATCH AND PAINT ALL VOIDS WHERE EXISTING ELECTRICAL DEVICES WERE REMOVED.

SYMBOL LEGEND

SYMBOL	DESCRIPTION	REMARKS
	SPECIFICATION GRADE DUPLEX RECEPTACLE MOUNT 16" AFF. UNLESS OTHERWISE NOTED.	HUBBELL CR5362-## WITH NPJB COVER PLATE
	SPECIFICATION GRADE QUAD RECEPTACLE MOUNT 16" AFF. UNLESS OTHERWISE NOTED.	HUBBELL (2) CR5362-### WITH NPJB COVER PLATE
	SPECIFICATION GRADE WEATHER RESISTANT/GROUND FAULT INTERRUPTING DUPLEX RECEPTACLE WITH IN-USE WEATHER PROOF COVER. MOUNT 16" AFF. UNLESS OTHERWISE NOTED.	HUBBELL GFTR20-## WITH WF26M COVER PLATE
	SPECIFICATION GRADE GROUND FAULT INTERRUPTING DUPLEX RECEPTACLE - MOUNT 4" ABOVE COUNTER/BACKSPASH.	HUBBELL GF20-## WITH NPJB COVER PLATE
	250 VOLT RECEPTACLE WITH GROUND, "AMP" DESIGNATED RATING. FIELD VERIFY NUMBER OF POLE AND NEUTRAL MOUNT 16" AFF. UNLESS OTHERWISE NOTED.	HUBBELL TO MATCH EQUIPMENT
	SPECIFICATION GRADE DUPLEX RECEPTACLE MOUNT 16" AFF. UNLESS OTHERWISE NOTED. FEED FROM GFCI CIRCUIT BREAKER.	HUBBELL CR5362-## WITH NPJB COVER PLATE
	JUNCTION BOX SIZED PER NEC.	
	DISCONNECT SWITCH SEE PLANS FOR SIZE AND TYPE	SQUARE D HEAVY DUTY
	CEILING PANEL CABINET FAN. FURNISHED AND INSTALLED BY M.C. WIRED BY E.C.	SEE MECH. PLAN
	COMMUNICATION OUTLET - MOUNT 16" AFF. UNLESS OTHERWISE NOTED. SUB 3/4" CONDUIT TO ACCESSIBLE CEILING OR ATTIC SPACE. OUTLET, COVER PLATE AND WIRING BY OTHERS.	SINGLE GANG BOX HUBBELL NPJB COVER PLATE
	NEW CONCEALED WIRING	PER NEC.
	UNSWITCHED LIGHTING CONDUCTOR	PER NEC.
	HOME RUN TO PANEL BOARD. NUMBERS OF ARROW INDICATE CIRCUITS	PER NEC.
	120/208V 3W 4W PANEL BOARD - EXISTING. SEE PANEL SCHEDULES	SQUARE D N/4-N/INE
	SINGLE POLE TOGGLE SWITCH. MOUNT 42" AFF. UNLESS NOTED OTHERWISE.	HUBBELL CS221-## WITH NPJB COVER PLATE
	THREE WAY TOGGLE SWITCH. MOUNT 42" AFF. UNLESS NOTED OTHERWISE.	HUBBELL CS223-## WITH NPJB COVER PLATE
	WALL MOUNTED OCCUPANCY SENSOR SWITCH. PASSIVE INFRARED MOUNT 42" AFF. UNLESS NOTED OTHERWISE. 800W/120VAC OR 1200W/277VAC	WATTSTOPPER PW400-## NPJB COVER PLATE
A.F.C.	ABOVE FINISHED CEILING	
A.F.F.	ABOVE FINISHED FLOOR - NOTE ALL MOUNTING DIMENSIONS GIVEN ARE TO THE BOTTOM OF THE OUTLET BOX	
B.F.F.	BELOW FINISHED FLOOR	
B.F.G.	BELOW FINISHED GRADE	
'RE'	EXISTING ELECTRICAL DEVICE, LIGHTING FIXTURE, AND/OR TELECOM DEVICE TO BE RELOCATED. SEE PLANS FOR TYPES, NEW LOCATION SHOWN ON RENOVATION PLANS	
'E'	EXISTING ELECTRICAL DEVICE, LIGHTING FIXTURE, AND/OR TELECOM DEVICE TO REMAIN. SEE PLANS FOR TYPES.	
	CONNECT TO EXISTING CIRCUIT	
	ALL ELECTRICAL ITEMS SHOWN DASHED ARE EXISTING ELECTRICAL ITEM TO BE REMOVED OR RELOCATED. RELOCATED ITEMS ARE DENOTED WITH 'RE'. REFER TO PLANS FOR ITEM SPECIFIC NOTES.	EXISTING
	EXISTING EXIT / EGRESS LIGHTING FIXTURES TO REMAIN	EXISTING
	EXISTING 2x4 LIGHTING FIXTURE TO REMAIN	EXISTING
	CORD DROP TO BE REMOVED	EXISTING

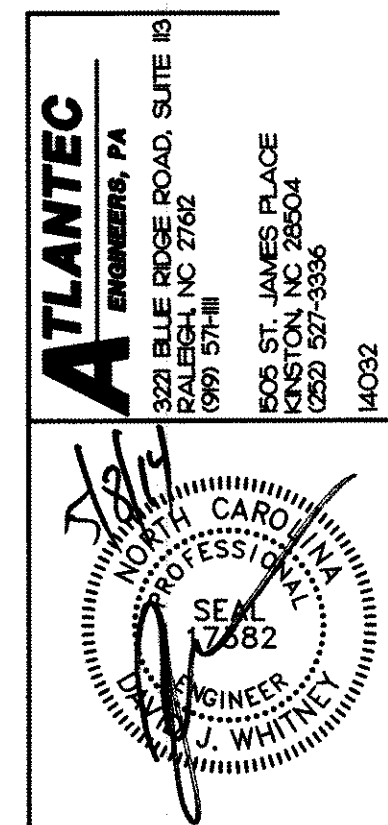
NOTES:

- E.C. SHALL SUBMIT CATALOG SHEETS FOR COLOR AND MATERIAL APPROVAL OF ALL SWITCH, RECEPTACLE AND WALL PLATE TO ARCHITECT PRIOR PURCHASING ANY.
- REFER TO LUMINAIRE SCHEDULE FOR NEW LIGHTING SYMBOLS AND TYPES

Interior Alteration

POWER SECURE

1609 Heritage Commerce Ct
Wake Forest, North Carolina



MAURER ARCHITECTURE

115.5 EAST HARGETT STREET, SUITE 300
RALEIGH, NORTH CAROLINA 27601
TEL. 919-829-4969 FAX. 919-829-0860

DATE	04.07.14
DR.	SCB
CH.	DJW
PROJ. #	13049
REVISIONS	DATE
--	--/--

ELECTRICAL
SYMBOLS, NOTES &
DETAILS

E2.1

PANEL 1B															120/208V, 3 PHASE, 4 WIRE																																		
CKT	DESCRIPTION	KVA	C	G	W	CB	CKT	DESCRIPTION	KVA	C	G	W	CB	CKT	DESCRIPTION	KVA	C	G	W	CB	CKT	DESCRIPTION	KVA	C	G	W	CB	CKT	DESCRIPTION	KVA	C	G	W	CB															
1	RECEPT - OFFICE 1ST FLR	0.8	1/2	12	12	20	1	2	20	12	12	1/2	0.8	RECEPT - OFFICE 2ND FLR	2	20	12	12	1/2	0.8	RECEPT - OFFICE 2ND FLR	2	20	12	12	1/2	0.8	RECEPT - OFFICE 2ND FLR	2	20	12	12	1/2	0.8															
3	RECEPT - OFFICE 1ST FLR	0.8	1/2	12	12	20	3	4	20	12	12	1/2	0.8	RECEPT - OFFICE 2ND FLR	4	20	12	12	1/2	0.8	RECEPT - OFFICE 2ND FLR	4	20	12	12	1/2	0.8	RECEPT - OFFICE 2ND FLR	4	20	12	12	1/2	0.8															
5	RECEPT - OFFICE 1ST FLR	0.8	1/2	12	12	20	5	6	20	12	12	1/2	0.8	RECEPT - OFFICE 2ND FLR	6	20	12	12	1/2	0.8	RECEPT - OFFICE 2ND FLR	6	20	12	12	1/2	0.8	RECEPT - OFFICE 2ND FLR	6	20	12	12	1/2	0.8															
7	RECEPT - OFFICE 1ST FLR	0.8	1/2	12	12	20	7	8	20	12	12	1/2	0.8	RECEPT - OFFICE 2ND FLR	8	20	12	12	1/2	0.8	RECEPT - OFFICE 2ND FLR	8	20	12	12	1/2	0.8	RECEPT - OFFICE 2ND FLR	8	20	12	12	1/2	0.8															
9	RECEPT - OFFICE 1ST FLR	0.8	1/2	12	12	20	9	10	20	12	12	1/2	0.8	RECEPT - OFFICE 2ND FLR	10	20	12	12	1/2	0.8	RECEPT - OFFICE 2ND FLR	10	20	12	12	1/2	0.8	RECEPT - OFFICE 2ND FLR	10	20	12	12	1/2	0.8															
11	RECEPT - OFFICE 1ST FLR	0.8	1/2	12	12	20	11	12	20	12	12	1/2	0.8	RECEPT - OFFICE 2ND FLR	12	20	12	12	1/2	0.8	RECEPT - OFFICE 2ND FLR	12	20	12	12	1/2	0.8	RECEPT - OFFICE 2ND FLR	12	20	12	12	1/2	0.8															
13	RECEPT - OFFICE 1ST FLR	0.8	1/2	12	12	20	13	14	20	12	12	1/2	0.8	RECEPT - OFFICE 2ND FLR	14	20	12	12	1/2	0.8	RECEPT - OFFICE 2ND FLR	14	20	12	12	1/2	0.8	RECEPT - OFFICE 2ND FLR	14	20	12	12	1/2	0.8															
15	RECEPT - OFFICE 1ST FLR	0.8	1/2	12	12	20	15	16	20	12	12	1/2	0.8	RECEPT - OFFICE 2ND FLR	16	20	12	12	1/2	0.8	RECEPT - OFFICE 2ND FLR	16	20	12	12	1/2	0.8	RECEPT - OFFICE 2ND FLR	16	20	12	12	1/2	0.8															
17	RECEPT - OFFICE 1ST FLR	0.8	1/2	12	12	20	17	18	20	12	12	1/2	0.8	RECEPT - OFFICE 2ND FLR	18	20	12	12	1/2	0.8	RECEPT - OFFICE 2ND FLR	18	20	12	12	1/2	0.8	RECEPT - OFFICE 2ND FLR	18	20	12	12	1/2	0.8															
19	RECEPT - OFFICE 1ST FLR	0.8	1/2	12	12	20	19	20	20	12	12	1/2	0.8	RECEPT - OFFICE 2ND FLR	20	20	12	12	1/2	0.8	RECEPT - OFFICE 2ND FLR	20	20	12	12	1/2	0.8	RECEPT - OFFICE 2ND FLR	20	20	12	12	1/2	0.8															
21	RECEPT - OFFICE 1ST FLR	0.8	1/2	12	12	20	21	22	20	12	12	1/2	0.8	RECEPT - OFFICE 2ND FLR	22	20	12	12	1/2	0.8	RECEPT - OFFICE 2ND FLR	22	20	12	12	1/2	0.8	RECEPT - OFFICE 2ND FLR	22	20	12	12	1/2	0.8															
23	RECEPT - OFFICE 1ST FLR	0.8	1/2	12	12	20	23	24	20	12	12	1/2	0.8	RECEPT - OFFICE 2ND FLR	24	20	12	12	1/2	0.8	RECEPT - OFFICE 2ND FLR	24	20	12	12	1/2	0.8	RECEPT - OFFICE 2ND FLR	24	20	12	12	1/2	0.8															
25	RECEPT - OFFICE 1ST FLR	0.8	1/2	12	12	20	25	26	20	12	12	1/2	0.8	RECEPT - OFFICE 2ND FLR	26	20	12	12	1/2	0.8	RECEPT - OFFICE 2ND FLR	26	20	12	12	1/2	0.8	RECEPT - OFFICE 2ND FLR	26	20	12	12	1/2	0.8															
27	RECEPT - OFFICE 1ST FLR	0.8	1/2	12	12	20	27	28	20	12	12	1/2	0.8	RECEPT - OFFICE 2ND FLR	28	20	12	12	1/2	0.8	RECEPT - OFFICE 2ND FLR	28	20	12	12	1/2	0.8	RECEPT - OFFICE 2ND FLR	28	20	12	12	1/2	0.8															
29	RECEPT - OFFICE 1ST FLR	0.8	1/2	12	12	20	29	30	20	12	12	1/2	0.8	RECEPT - OFFICE 2ND FLR	30	20	12	12	1/2	0.8	RECEPT - OFFICE 2ND FLR	30	20	12	12	1/2	0.8	RECEPT - OFFICE 2ND FLR	30	20	12	12	1/2	0.8															
31	PANEL 1C	0.8	1/2	12	12	20	31	32	20	12	12	1/2	0.8	RECEPT - OFFICE 2ND FLR	32	20	12	12	1/2	0.8	RECEPT - OFFICE 2ND FLR	32	20	12	12	1/2	0.8	RECEPT - OFFICE 2ND FLR	32	20	12	12	1/2	0.8															
33	RECEPT - OFFICE 1ST FLR	0.8	1/2	12	12	20	33	34	20	12	12	1/2	0.8	RECEPT - OFFICE 2ND FLR	34	20	12	12	1/2	0.8	RECEPT - OFFICE 2ND FLR	34	20	12	12	1/2	0.8	RECEPT - OFFICE 2ND FLR	34	20	12	12	1/2	0.8															
35	RECEPT - OFFICE 1ST FLR	0.8	1/2	12	12	20	35	36	20	12	12	1/2	0.8	RECEPT - OFFICE 2ND FLR	36	20	12	12	1/2	0.8	RECEPT - OFFICE 2ND FLR	36	20	12	12	1/2	0.8	RECEPT - OFFICE 2ND FLR	36	20	12	12	1/2	0.8															
37	RECEPT - OFFICE 1ST FLR	0.8	1/2	12	12	20	37	38	20	12	12	1/2	0.8	RECEPT - OFFICE 2ND FLR	38	20	12	12	1/2	0.8	RECEPT - OFFICE 2ND FLR	38	20	12	12	1/2	0.8	RECEPT - OFFICE 2ND FLR	38	20	12	12	1/2	0.8															
39	RECEPT - OFFICE 1ST FLR	0.8	1/2	12	12	20	39	40	20	12	12	1/2	0.8	RECEPT - OFFICE 2ND FLR	40	20	12	12	1/2	0.8	RECEPT - OFFICE 2ND FLR	40	20	12	12	1/2	0.8	RECEPT - OFFICE 2ND FLR	40	20	12	12	1/2	0.8															
41	RECEPT - OFFICE 1ST FLR	0.8	1/2	12	12	20	41	42	20	12	12	1/2	0.8	RECEPT - OFFICE 2ND FLR	42	20	12	12	1/2	0.8	RECEPT - OFFICE 2ND FLR	42	20	12	12	1/2	0.8	RECEPT - OFFICE 2ND FLR	42	20	12	12	1/2	0.8															
DESCRIPTION															100 A MINIMUM BUS SIZE															SURFACE MOUNTING																			
CONNT. LOAD															MAIN LUGS ONLY															NEHA 1 ENCLOSURE																			
RECEPTACLE															100% / 200%															GROUND BAR																			
MTR/COILS															5.71															5.71																			
HEATS															0.00															0.00																			
WATER HEATER															0.00															0.00																			
EQUIPMENT															16.00															16.00																			
KITCHEN EQUIP.															0.00															0.00																			
SPECIAL EQ.															0.00															0.00																			
PCK. OF LARGEST HVAC/MOTOR															0.00															0.00																			
TOTAL DEMAND															42.66															42.66																			

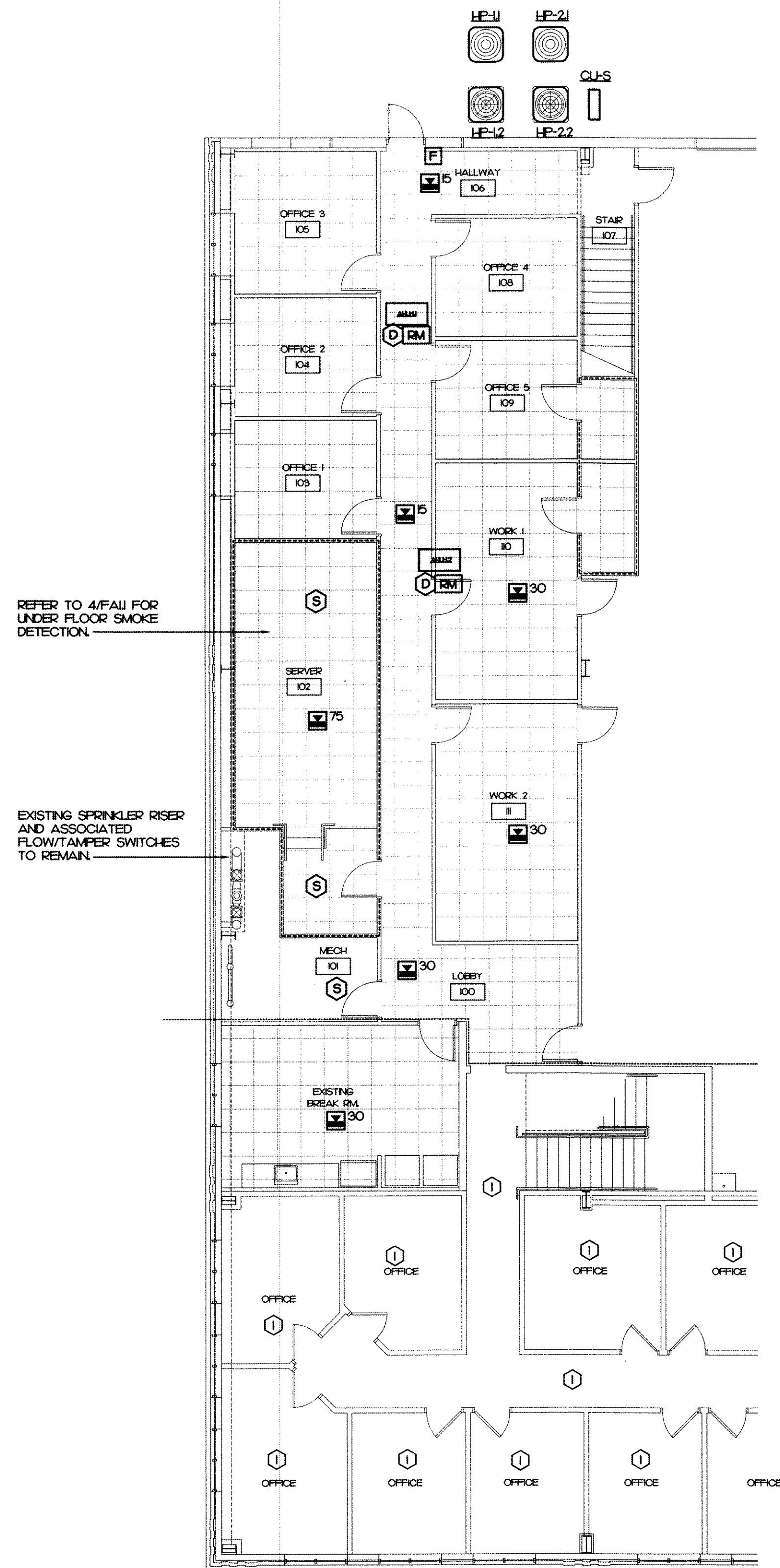
225 A MINIMUM BUS SIZE		
MAIN LUGS ONLY		
22 K MINIMUM ACI RATING		

NOTES		
1. SQUARE D MOLD		
2. SHUNT-TRIP BREAKER		
3. GFI BREAKER, NO SHARED NEUTRAL		

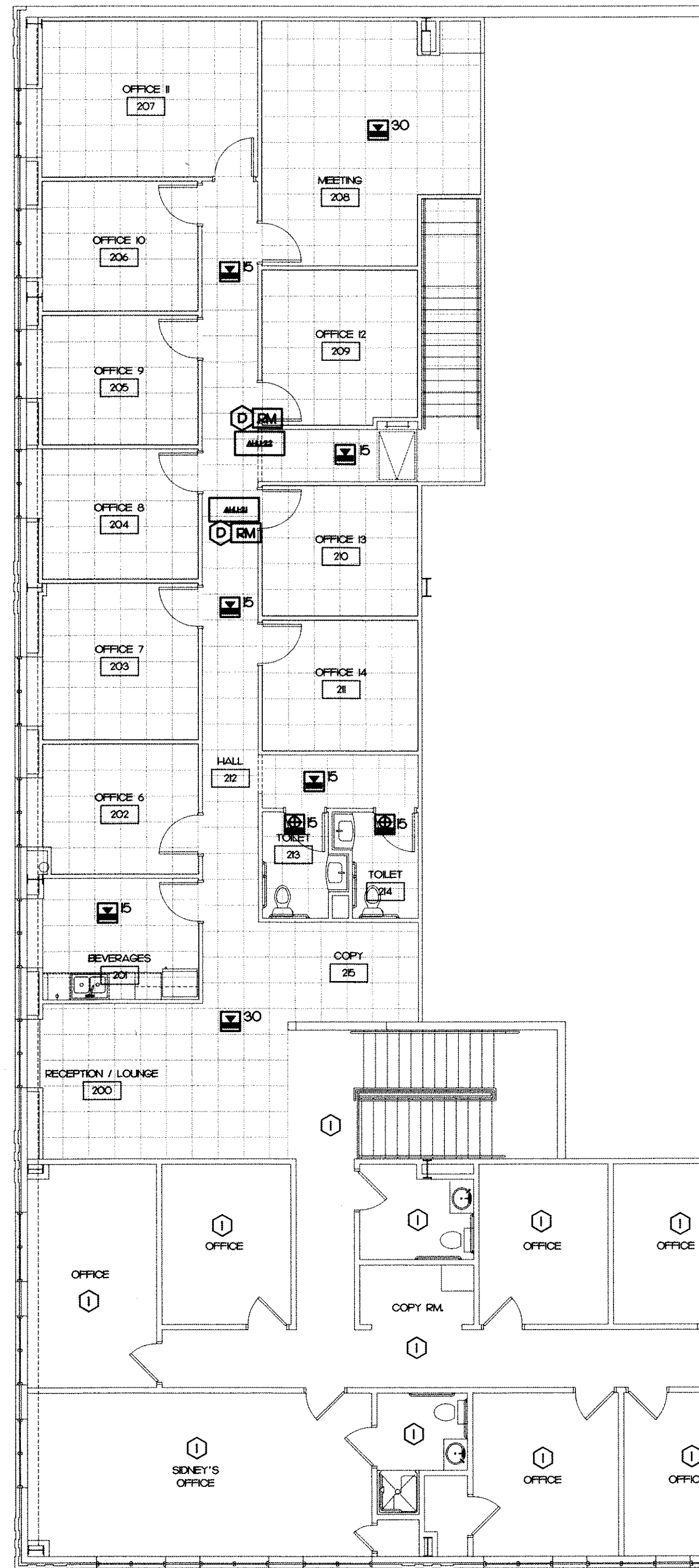
CONNECTED LOADS		
PHASE A	18	KVA
PHASE B	13.7	KVA
PHASE C	16.3	KVA
TOTAL	47.9	KVA
DEMAND	118	AMP

PANEL 1C															120/208V, 3 PHASE, 4 WIRE														
CKT	DESCRIPTION	KVA	C	G	W	CB	CKT	CKT	CB	W	G	C	KVA	DESCRIPTION	CKT														
1	IT EQUIPMENT	1.0	1/2	12	12	20	1	2	30	10	10	3/4	2.0	IT EQUIPMENT	2														
3	IT EQUIPMENT	1.0	1/2	12	12	20	3	4	10	10			2.0	IT EQUIPMENT	4														
5	IT EQUIPMENT	1.0	1/2	12	12	20	5	6	30	10	10	3/4	2.0	IT EQUIPMENT	6														
7	IT EQUIPMENT	1.0	1/2	12	12	20	7	8	10	10	10		2.0	IT EQUIPMENT	8														
9	SPARE ONLY	0.0	---	---	---	20	9	10	30	10	10	3/4	2.0	IT EQUIPMENT	10														
11	SPARE	0.0	---	---	---	20	11	12	10	10			2.0	IT EQUIPMENT	12														
13	SPARE	0.0	---	---	---	20	13	14	30	---	---	---	0.0	SPARE	14														
15	SPARE	0.0	---	---	---	20	15	16	---	---	---	---	0.0	SPARE	16														
17	SPARE	0.0	---	---	---	20	17	18	40	8	10	3/4	2.0	CU-S	18														
19	SPARE	0.0	---	---	---	20	19	20	8				2.0	SPARE	20														
21	SPACE ONLY	0.0	---	---	---	---	21	22	15	12	12	1/2	0.0	ANH-S	22														
23	SPACE ONLY	0.0	---	---	---	---	23	24	---	---	---	---	2.0	SPACE ONLY	24														
25	SPACE ONLY	0.0	---	---	---	---	25	26	---	---	---	---	0.0	SPACE ONLY	26														
27	SPACE ONLY	0.0	---	---	---	---	27	28	---	---	---	---	0.0	SPACE ONLY	28														
29	SPACE ONLY	0.0	---	---	---	---	29	30	---	---	---	---	0.0	SPACE ONLY	30														
									</																				

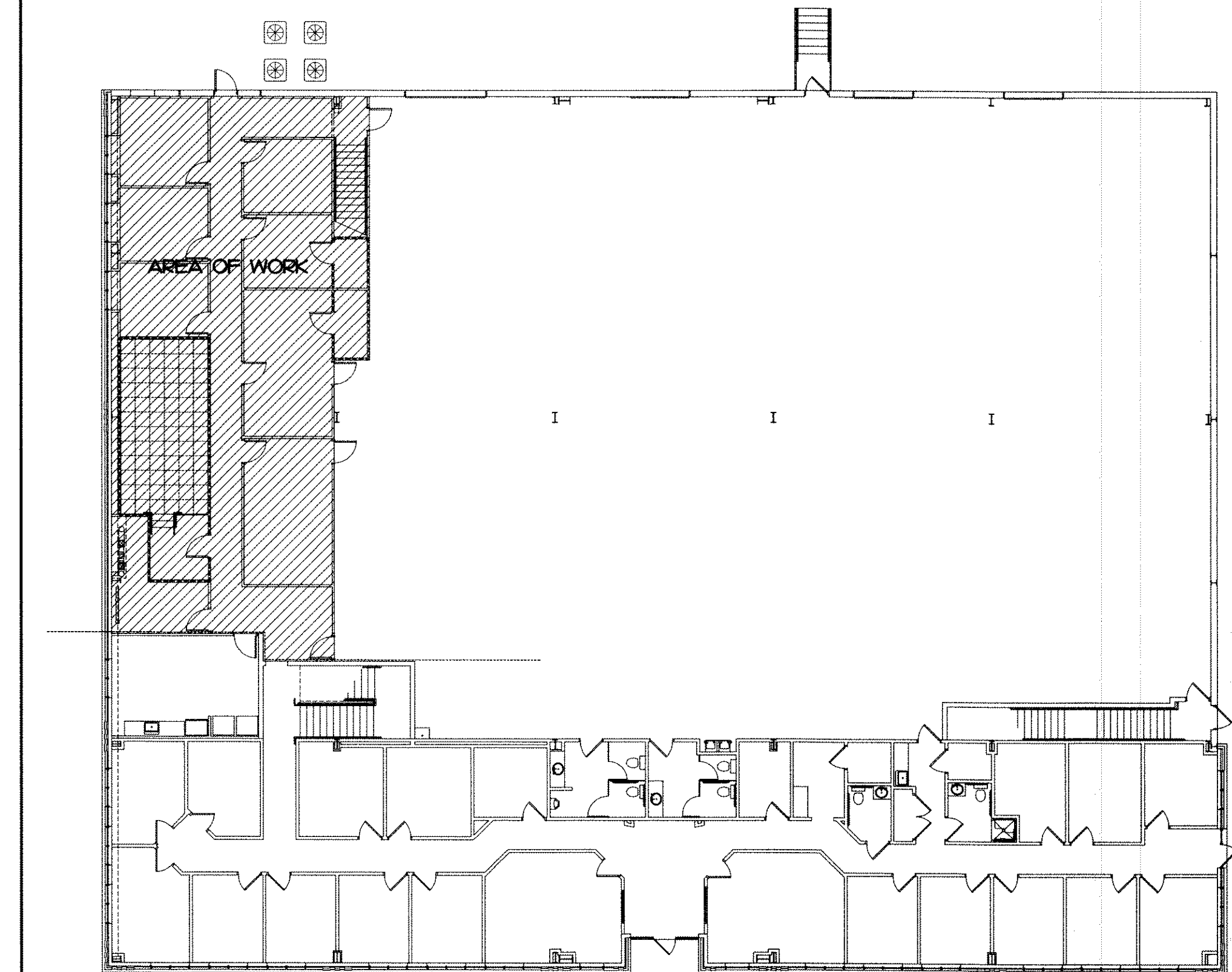
1 1ST FLOOR FIRE ALARM PLAN
SCALE: 1/8" = 1'-0"



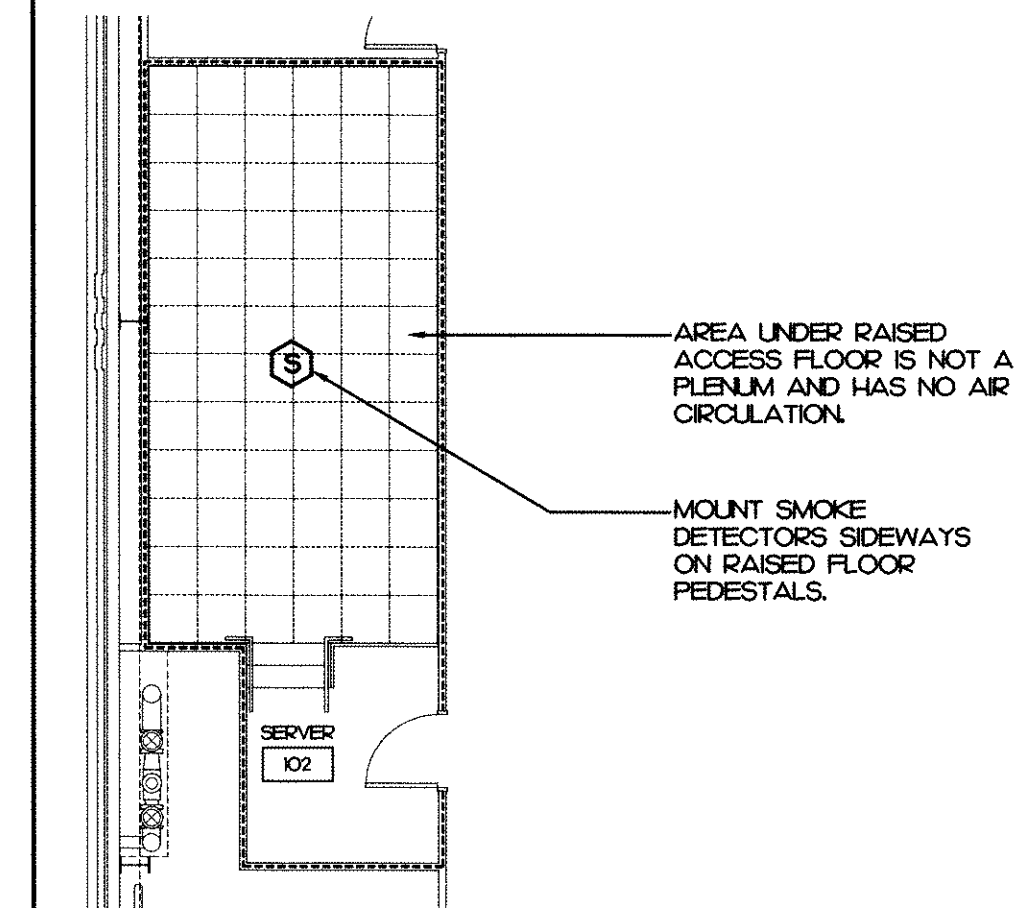
2 2ND FLOOR FIRE ALARM PLAN
SCALE: 1/8" = 1'-0"



3 KEY PLAN
SCALE: 1/8" = 1'-0"



4 UNDER FLOOR FIRE ALARM
SCALE: 1/8" = 1'-0"



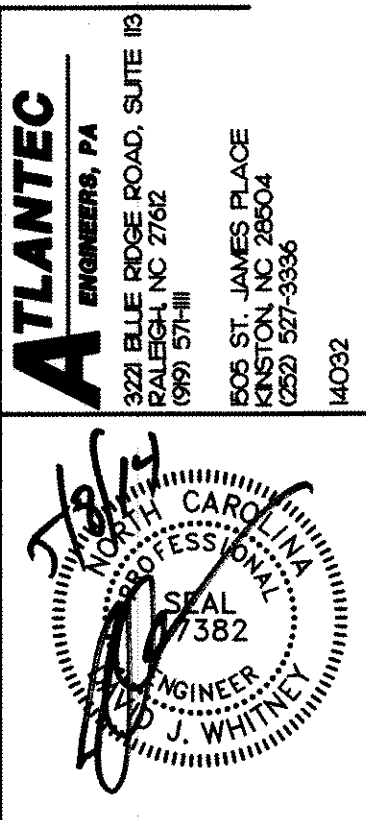
GENERAL NOTES

1. NEW FIRE ALARM DEVICES TO MATCH EXISTING FIRE ALARM DEVICES. CONNECT TO EXISTING FIRE ALARM PANEL. FIELD VERIFY FIRE ALARM SYSTEM TYPE AND LOCATION OF EXISTING FIRE ALARM PANEL.

KEY NOTES

- ① NO WORK THIS AREA

Interior Alteration
POWER SECURE
1609 Heritage Commerce Ct
Wake Forest, North Carolina

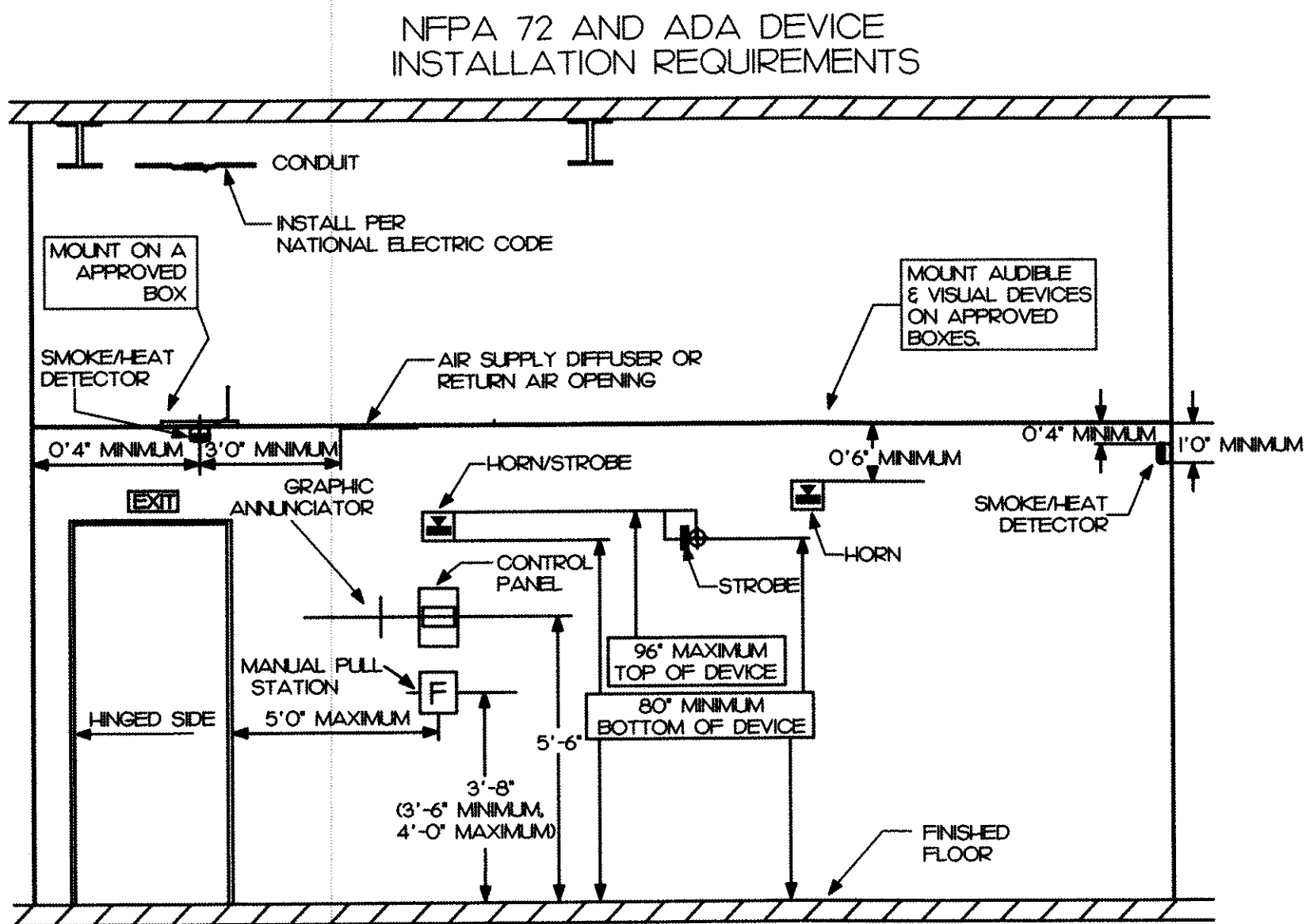


MAURER ARCHITECTURE
115.5 EAST HARGETT STREET, SUITE 300
RALEIGH, NORTH CAROLINA 27601
TEL. 919-829-4969 FAX. 919-829-0860

DATE	04.07.14
DR.	SCB
CH.	DJW
PROJ. #	13049
REVISIONS	DATE
--	--/--

FIRE ALARM
PLAN

FA1.1



1 FIRE ALARM DEVICE MOUNTING DETAIL
FA2J NO SCALE

FIRE ALARM SYSTEM INPUT/OUTPUT MATRIX		SYSTEM OUTPUTS															
		FACP ANNUNCIATION				NOTIFICATION				REQUIRED FIRE SAFETY CONTROL							
SYSTEM INPUTS																	
		ACTIVATE COMMON ALARM SIGNAL ACTIVATE AUDIBLE ALARM SIGNAL ACTIVATE COMMON SUPERVISORY SIGNAL ACTIVATE AUDIBLE SUPERVISORY SIGNAL ACTIVATE COMMON TROUBLE SIGNAL ACTIVATE AUDIBLE TROUBLE SIGNAL ACTIVATE ZONE OR DEVICE ADDRESS SIGNAL DISPLAY GENERAL TROUBLE SIGNAL TRANSMIT FIRE ALARM SIGNAL TO CENTRAL STATION TRANSMIT SUPERVISORY SIGNAL TO CENTRAL STATION TRANSMIT TROUBLE SIGNAL TO CENTRAL STATION SHUT DOWN RESPECTIVE AIR HANDLING EQUIPMENT															
1	FIRE ALARM SYSTEM AC POWER FAILURE	A	B	C	D	E	F	G	H	I	J	K	L	M	N	O	1
2	FIRE ALARM SYSTEM LOW BATTERY				●	●							●				2
3	OPEN CIRCUIT						●	●						●			3
4	GROUND FAULT						●	●						●			4
5	NOTIFICATION APPLIANCE CIRCUIT SHORT						●	●						●			5
6	BUILDING MANUAL PULL STATIONS		●	●					●			●					6
7	AREA SMOKE DETECTORS		●	●					●	●	●						7
8	HVAC AIR DUCT SMOKE DETECTORS				●	●			●			●				●	8
9	SPRINKLER WATER FLOW SWITCH		●	●					●	●	●						9
10	SPRINKLER VALVE TAMPER SWITCH					●	●						●				10
		A	B	C	D	E	F	G	H	I	J	K	L	M	N	O	

2 FIRE ALARM MATRIX
FA2J NO SCALE

FIRE ALARM NOTES

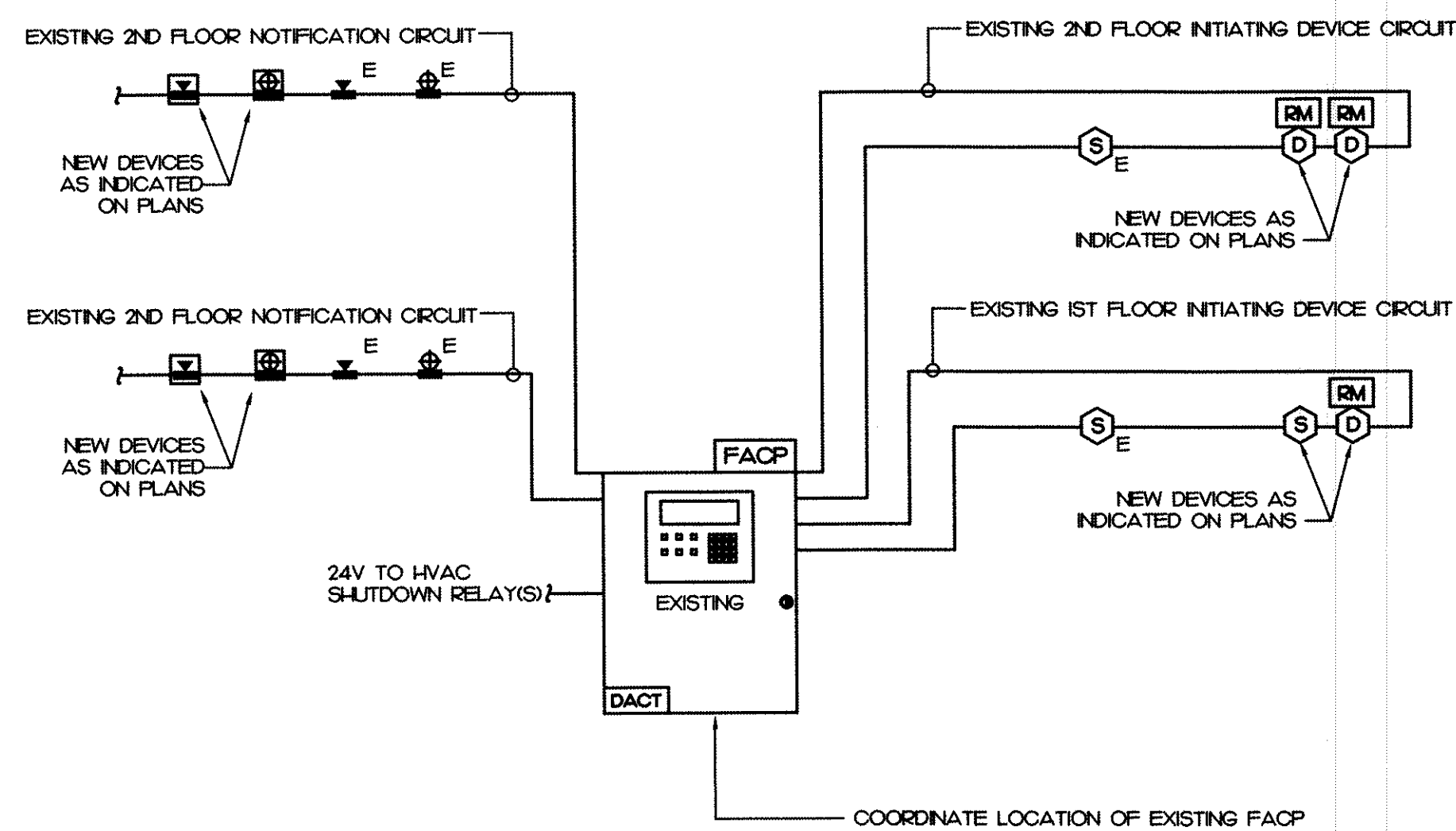
- SEE PLANS FOR QUANTITY AND LOCATION OF ALL EQUIPMENT.
- THIS PLAN SHOWS ONLY ADDITIONAL EQUIPMENT TO EXISTING FIRE ALARM SYSTEM.
- E.G. SHALL VERIFY CAPACITY OF EXISTING SYSTEM PRIOR TO ANY MODIFICATION.
- ALL MODIFICATION SHALL NOT VOID EXISTING SYSTEM CURRENT WARRANTY OR SERVICE CONTRACT.
- REPROGRAM EXISTING PANEL AS REQUIRED BY E.G.
- E.G. SHALL PROVIDE ALL REQUIRED ISOLATION MODULES OR NAC BOOSTER PANELS.
- CONTRACTOR SHALL PROVIDE COMPLETE DOCUMENT PER 2012 FIRE CODE SECTION 907.11 AND 907.12 TO ENGINEER FOR APPROVAL PRIOR TO SUBMIT TO AND TESTING BY STATE FIRE MARSHAL'S OFFICE.
- PLACARD THE ENTIRE FIRE ALARM SYSTEM. PROVIDE PANEL AND CIRCUIT NUMBERS ON A NAME PLATE AFFIXED TO THE FACE OF THE FIRE ALARM CONTROL PANEL.
- CONTRACTOR SHALL PROVIDE UPDATED ZONE MAPS COMPLETE WITH ADDRESSES FOR EACH FIRE ALARM DEVICE. MOUNT MAP(S) ADJACENT TO THE EXISTING FIRE ALARM CONTROL PANEL.
- ELECTRICAL CONTRACTOR SHALL PROVIDE BATTERY CALCULATIONS AND CUT SHEETS FOR FIRE ALARM SYSTEM TO ENGINEER FOR APPROVAL.
- ALL WIRING SHALL BE SUPERVISED.
- ALL WIRING SHALL BE PER MANUFACTURER'S SPECIFICATIONS.
- ALL WIRING IN WALLS OR FURRED SPACES SHALL BE IN CONDUIT.
- WHERE PERMITTED BY CODE, WIRING ABOVE ACCESSIBLE CEILINGS MAY BE RUN EXPOSED AND THE FOLLOWING REQUIREMENTS SHALL BE MET:
- WIRING SHALL BE PLENUM RATED WHERE APPLICABLE.
- PROVIDE BRIDLE RINGS FOR INDEPENDENT FIRE ALARM CABLE SUPPORT UNLESS SPECIFICALLY NOTED OTHERWISE. ANALOG LOOP WIRING INCOMING AND OUTGOING SHALL NOT BE SUPPORTED IN THE SAME BRIDLE RING.
- ALL NOTIFICATION CIRCUIT WIRING SHALL BE "CLASS B".
- PROVIDE WITH "SYNC MODULE" AS REQUIRED PER NFPA 72.
- FURNISH NOTIFICATION CIRCUITS AS REQUIRED TO ACCOMMODATE CIRCUIT LOADING. NO NOTIFICATION CIRCUIT SHALL BE LOADED TO MORE THAN 80% CAPACITY.
- PROVIDE SOUND (dB) AND CANDELA (Cd) RATINGS FOR ALL HORN/STROBE DEVICES PER NFPA 72, 75.4.4.7 AND 75.2.6.
- A DECIBEL LEVEL OF (5 dB ABOVE AMBIENT ON NFPA 72, TABLE A.7.4.2) SHALL BE MAINTAINED IN ALL GENERAL AREAS AND 100 dB (5 dB ABOVE AN AMBIENT OF 85 dB IN NFPA 72, 7.4.2.2) SHALL BE MAINTAINED IN ALL MECHANICAL EQUIPMENT ROOMS PER NFPA 72 AND THE 2012 NORTH CAROLINA STATE BUILDING CODE (SECTION 907.6.2).

3 FIRE ALARM NOTES
FA2J NO SCALE

SYMBOL LEGEND

(S)	SMOKE DETECTOR, PHOTOELECTRIC INTELLIGENT, ADDRESSABLE	MATCH EXISTING SYSTEM
(D)	DUCT SMOKE DETECTOR, PHOTOELECTRIC WITH SAMPLING TUBE INTELLIGENT, ADDRESSABLE	MATCH EXISTING SYSTEM
(F)	FIRE ALARM PULLSTATION MOUNT 42" AFF. ADDRESSABLE	MATCH EXISTING SYSTEM
XX	FIRE ALARM STROBE/HORN MOUNT 80" AFF. 75 dBA SOUND LEVEL, "XX" INDICATES CANDELA RATING.	MATCH EXISTING SYSTEM
XX	FIRE ALARM CEILING STROBE/HORN 75 dBA SOUND LEVEL, "XX" INDICATES CANDELA RATING.	MATCH EXISTING SYSTEM
XX	FIRE ALARM STROBE MOUNT 80" AFF. "XX" INDICATES CANDELA RATING.	MATCH EXISTING SYSTEM
XX	FIRE ALARM CEILING STROBE "XX" INDICATES CANDELA RATING.	MATCH EXISTING SYSTEM
(RM)	RELAY CONTROL MODULE ADDRESSABLE	MATCH EXISTING SYSTEM

4 FIRE ALARM SYMBOL LEGEND
FA2J NO SCALE

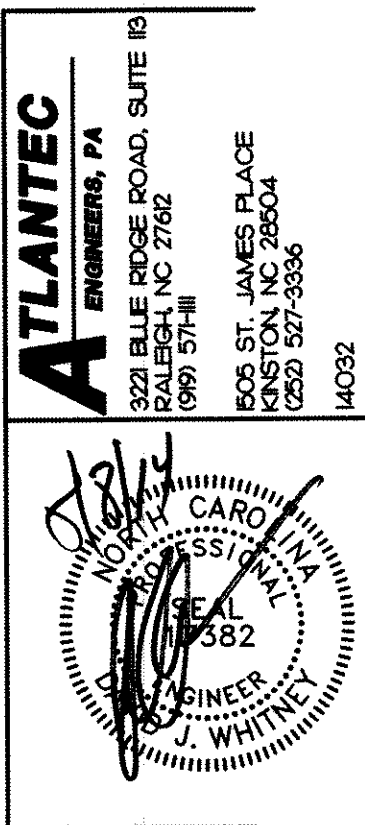


5 FIRE ALARM RISER DIAGRAM
FA2J NO SCALE

Interior Alteration

POWER SECURE

1609 Heritage Commerce Ct
Wake Forest, North Carolina



MAURER ARCHITECTURE

115.5 EAST HARGETT STREET, SUITE 300
RALEIGH, NORTH CAROLINA 27601
TEL. 919-829-4969 FAX. 919-829-0860

DATE	04.07.14
DR.	SCB
CH.	DJW
PROJ. #	13049
REVISIONS	DATE
--	--/--

FIRE ALARM
NOTES, SYMBOLS,
RISER & DETAILS

FA2.1